

SOUNDPROOFING RESIDENTIAL SCREED AND TILED FLOORS

Quality of life thanks
to REGUPOL impact
sound insulation and
vibration isolation



HOW CAN WE CREATE A HOME IN THE HEART OF THE CITY? TOGETHER.

Inner-city living can provide a vibrant and exciting lifestyle, not just for singles and couples, but also for whole families. Our living habits are evolving in conjunction with the way we work, rest and play. A growing number of people are recognising the benefits of living in the heart of the city, but they are seeking truly liveable homes, not just accommodation. A functional dwelling becomes a home when it is comfortable, quiet, environmentally sustainable and representative of its occupants' personal tastes.

Therein lies the challenge for developments situated within inner-city locales: high-density living co-locates residents, businesses, transport networks and recreation areas within limited confines. This close physical proximity presents challenges associated with noise, especially impact sound transference within and between properties.

The challenge of noise is exacerbated by the fact that hard flooring surfaces are often preferred by inner-city residents who seek a low-maintenance lifestyle. The style and elegance of hard flooring surfaces tend to complement the contemporary aesthetics of many inner-city abodes. Importantly, hard floor surfaces are easy to clean! Unfortunately, footfall noise is more pronounced on hard surfaces than on soft, unless acoustics are handled appropriately. Not only do hard surfaces have the potential to increase noise levels directly inside individual homes, they also have the potential to cause greater disturbance between connected properties.

Those who embrace a more connected lifestyle still value privacy and tranquility and don't necessarily want to be privy to their neighbours' daily activities. Likewise, occupants don't want their own footfall noise to be an annoyance as they navigate the home environment.

KEY TOPICS AT A GLANCE



07 Soundproofing DIRECT FIX TILES with **REGUPOL sonus multi 4.5**

11 Soundproofing SCREEDED TILED FLOORS with **REGUPOL sonus multi 4.5**

15 Soundproofing SCREEDED TILED FLOORS with **REGUPOL sonus core 5**

19 Soundproofing SCREEDED TILED FLOORS with **REGUPOL sonus curve 6**

23 Soundproofing SCREEDED TILED FLOORS with **REGUPOL sonus curve 8**

27 Soundproofing SCREEDED TILED FLOORS with **REGUPOL sonus core 10-S**

SOUNDPROOFING DIRECT FIX TILES



REGUPOL SONUS MULTI 4.5

Suitable for green buildings, **REGUPOL sonus multi 4.5** is a sustainable product made from pre-consumer polyurethane foam and cork elastomer bound with polyurethane.

All applications should be checked for suitability with the selected floor finish, waterproof membranes, **REGUPOL** adhesives, tile adhesives, grouts etc.

This environmentally preferable product has been independently certified as meeting the requirements of Good Environmental Choice Australia GECA 25-2011 v2.0i - Floor Coverings Standard. See www.geca.eco

REGUPOL sonus multi 4.5 is an acoustic underlay developed for its unique material composition which allows it to be a compatible surface to bond approved floor coverings such as carpet tiles, ceramic tiles, stone, marble, laminate, engineered timber and more.



Available in:

- Rolls 1m x 20lm
- Modular Tiles 1050mm x 500mm
- Thickness 4.5mm

ACOUSTICAL PERFORMANCE

DIRECT TILE Normalized Impact Sound Pressure Levels

Tested at CSIRO Hightett, in accordance with ISO 140-8: 1997 (E), ISO 140-6, AS ISO 717.2-2004, ASTM E989-89. Test area 11.7m². Results can vary when different floors are installed and/or if bonded

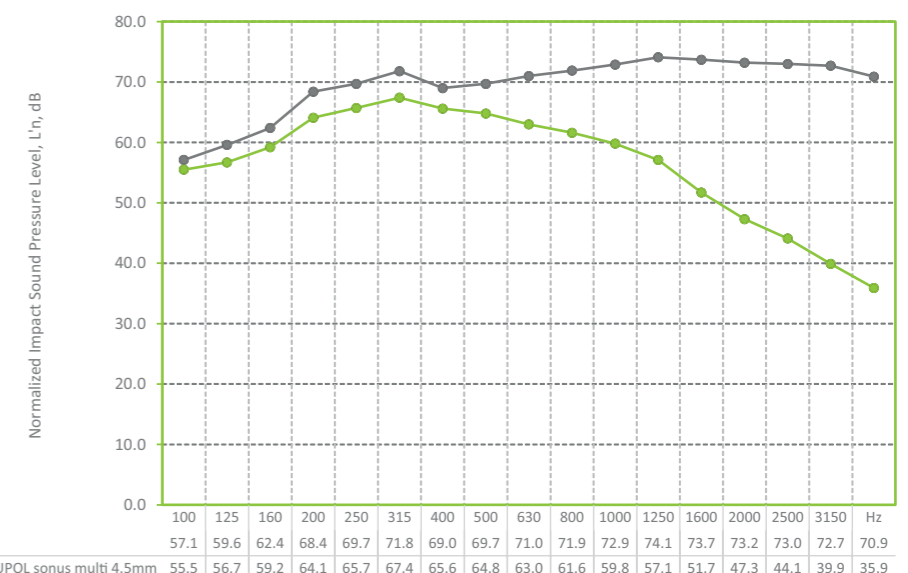
REPORT RG019

Layer of 10mm Porcelain Tile, bonded to **REGUPOL sonus multi 4.5mm**, bonded to 150mm Concrete Slab (no ceiling).

Ln,w
61dB

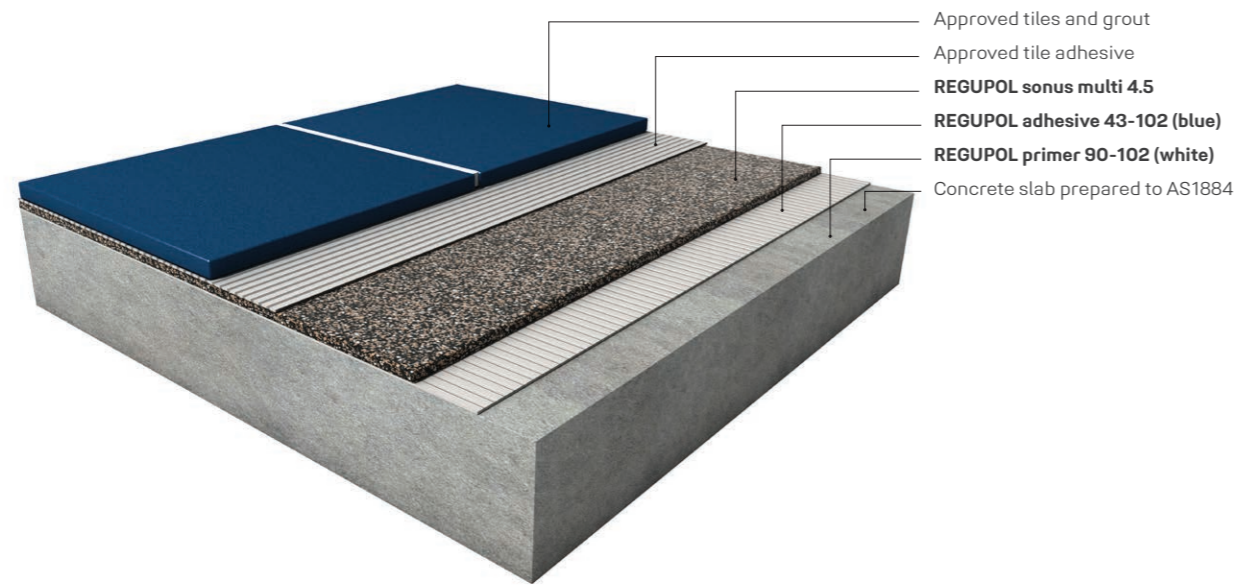
ΔLw
17dB

49
IIC



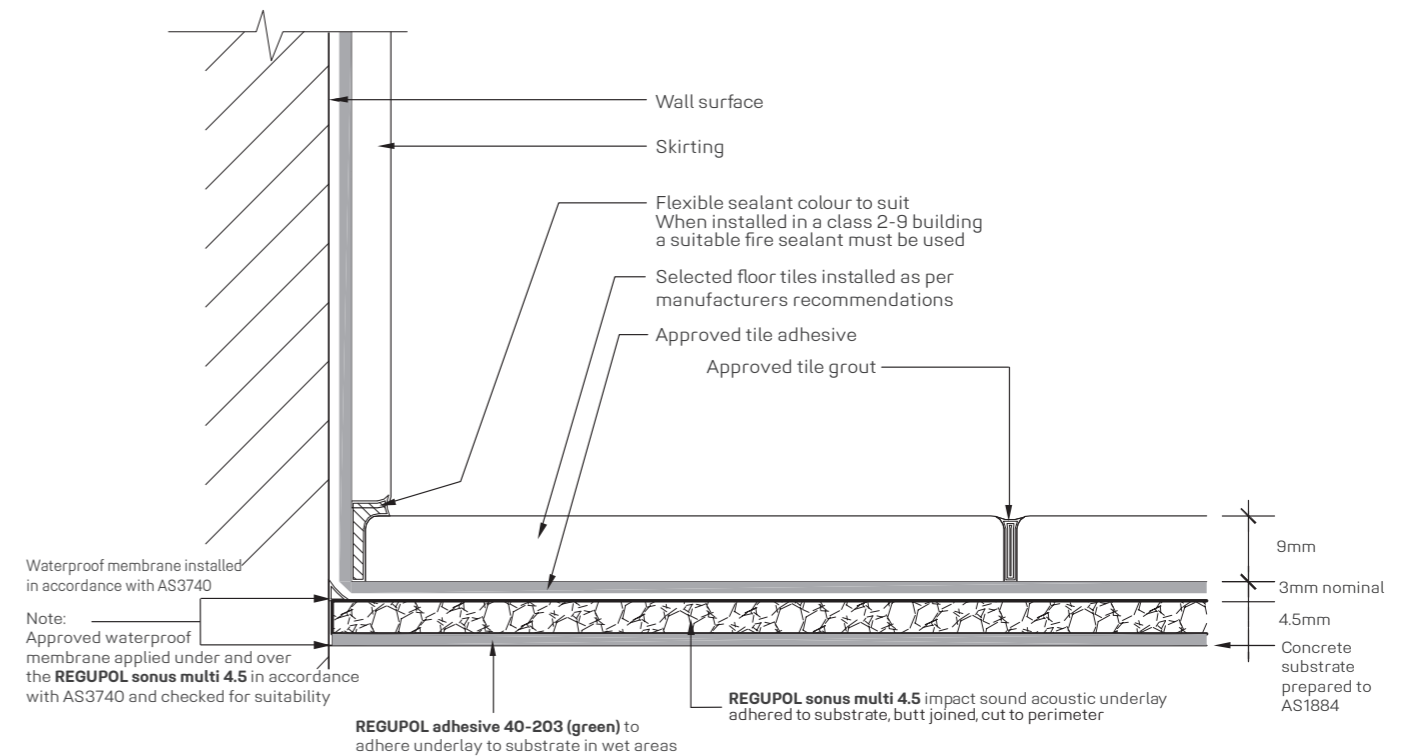
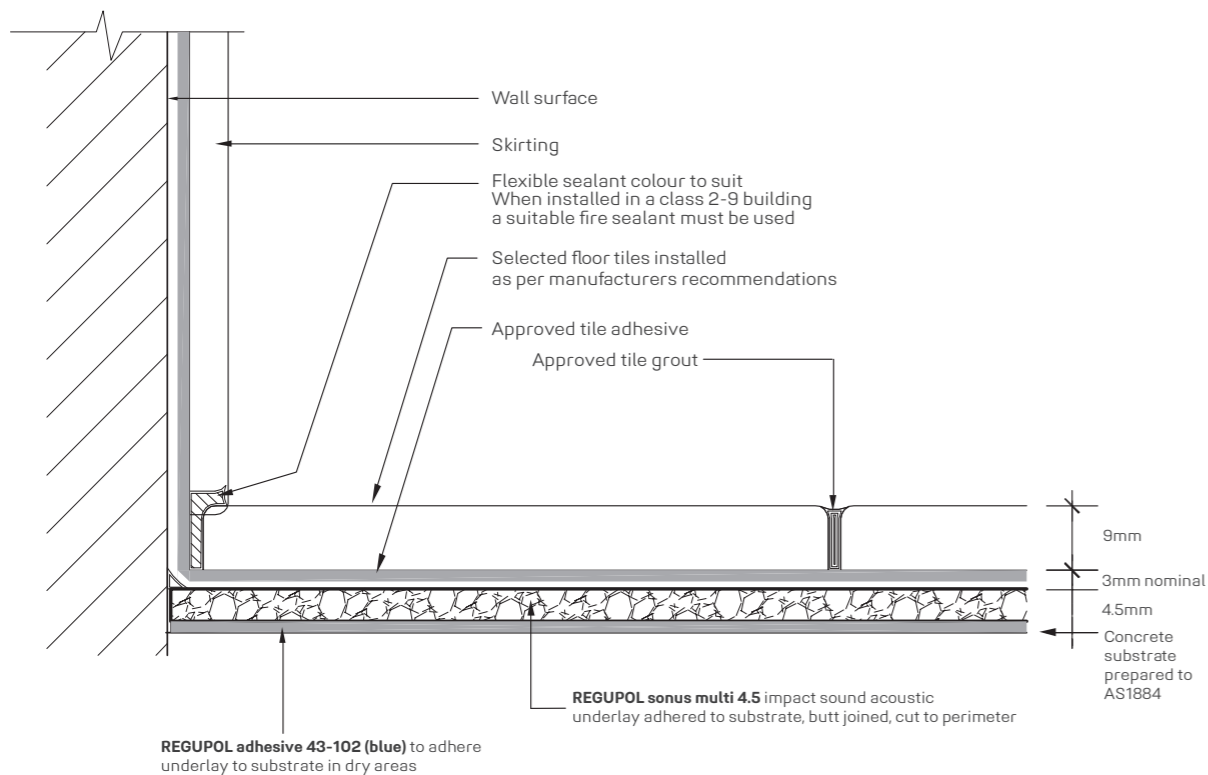
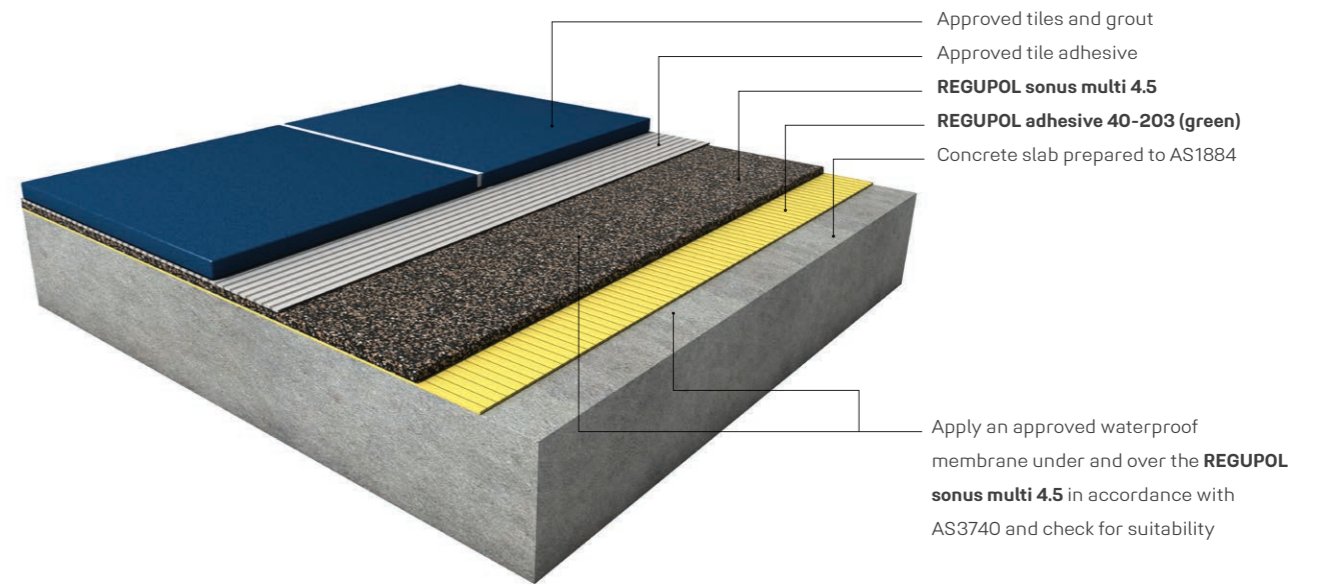
DRY AREA TILED FLOOR

This **REGUPOL sonus multi 4.5** system reflects a typical residential application with approved tiled floor coverings. For all other applications please contact **REGUPOL** acoustic division. Please note that drawings are not to scale and are for illustration purposes only.



WET AREA TILED FLOOR

This **REGUPOL sonus multi 4.5** system reflects a typical residential application with approved tiled floor coverings. For all other applications please contact **REGUPOL** acoustic division. Please note that drawings are not to scale and are for illustration purposes only.





SOUNDPROOFING SCREEDED TILE FLOORS

REGUPOL SONUS MULTI 4.5

Suitable for green buildings, **REGUPOL sonus multi 4.5** is a sustainable product made from pre-consumer polyurethane foam and cork elastomer bound with polyurethane.

All applications should be checked for suitability with the selected floor finish, waterproof membranes, **REGUPOL** adhesives, tile adhesives, grouts etc.

This environmentally preferable product has been independently certified as meeting the requirements of Good Environmental Choice Australia GECA 25-2011 v2.0i - Floor Coverings Standard. See www.geca.eco

REGUPOL sonus multi 4.5 is an acoustic underlay developed for its unique material composition which allows it to be a compatible surface to bond approved floor coverings such as carpet tiles, ceramic tiles, stone, marble, laminate, engineered timber and more.



Available in:

Rolls	1m x 20lm
Modular Tiles	1050mm x 500mm
Thickness	4.5mm

ACOUSTICAL PERFORMANCE

TILE WITH SCREED Normalized Impact Sound Pressure Levels

Tested at CSIRO Hightett, in accordance with ISO 140-8: 1997 (E), ISO 140-6, AS ISO 717.2-2004, ASTM E989-89. Test area 10.8m². Results can vary when different floors are installed and/or if bonded.

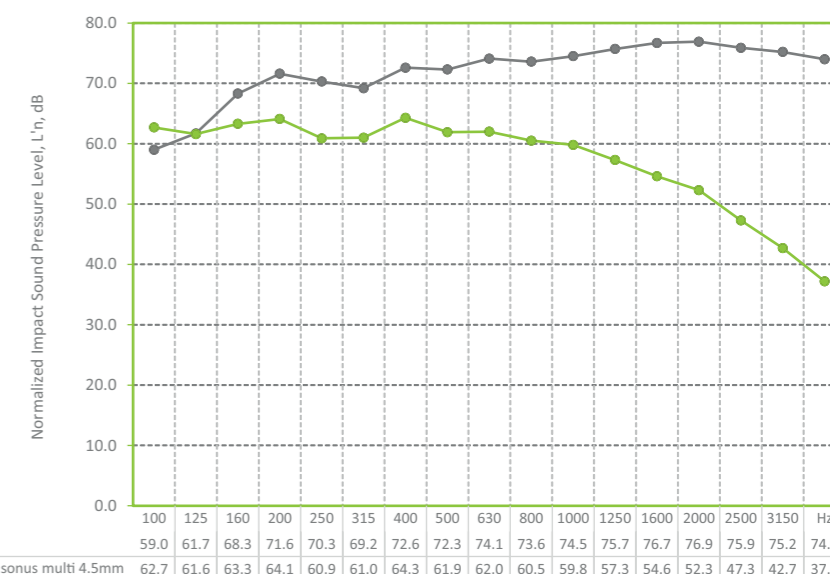
REPORT RG094

Layer of 8mm Ceramic Tile bonded to 30mm Screed Bed, to **REGUPOL sonus multi 4.5mm**, to 150mm Concrete Slab (no ceiling).

$L_{n,w}$
60dB

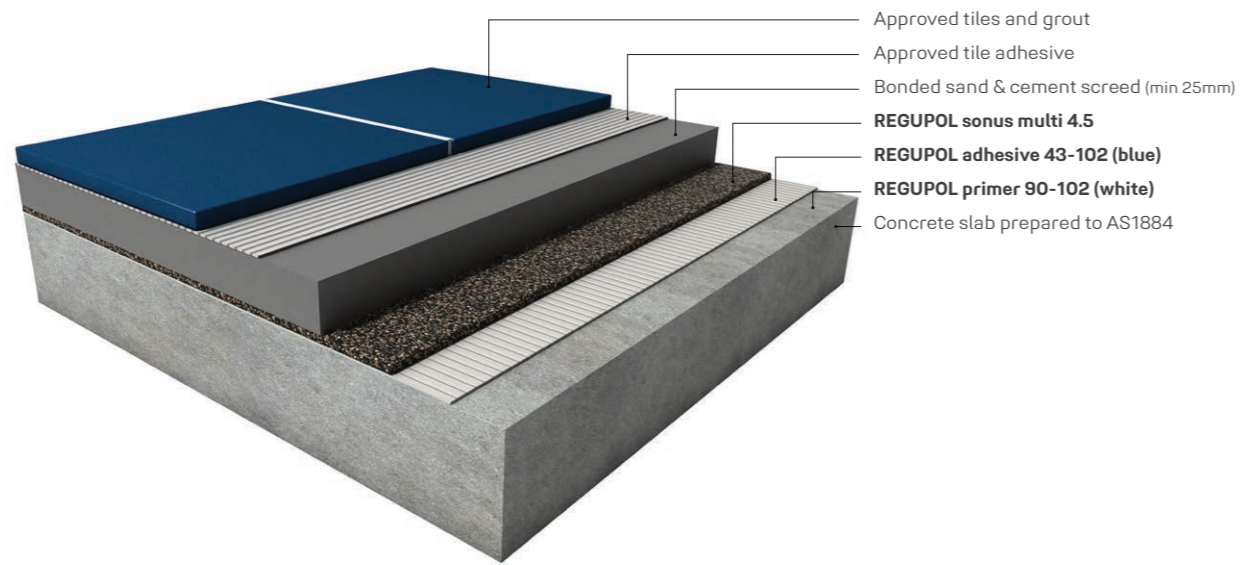
ΔL_w
19dB

50
IIC



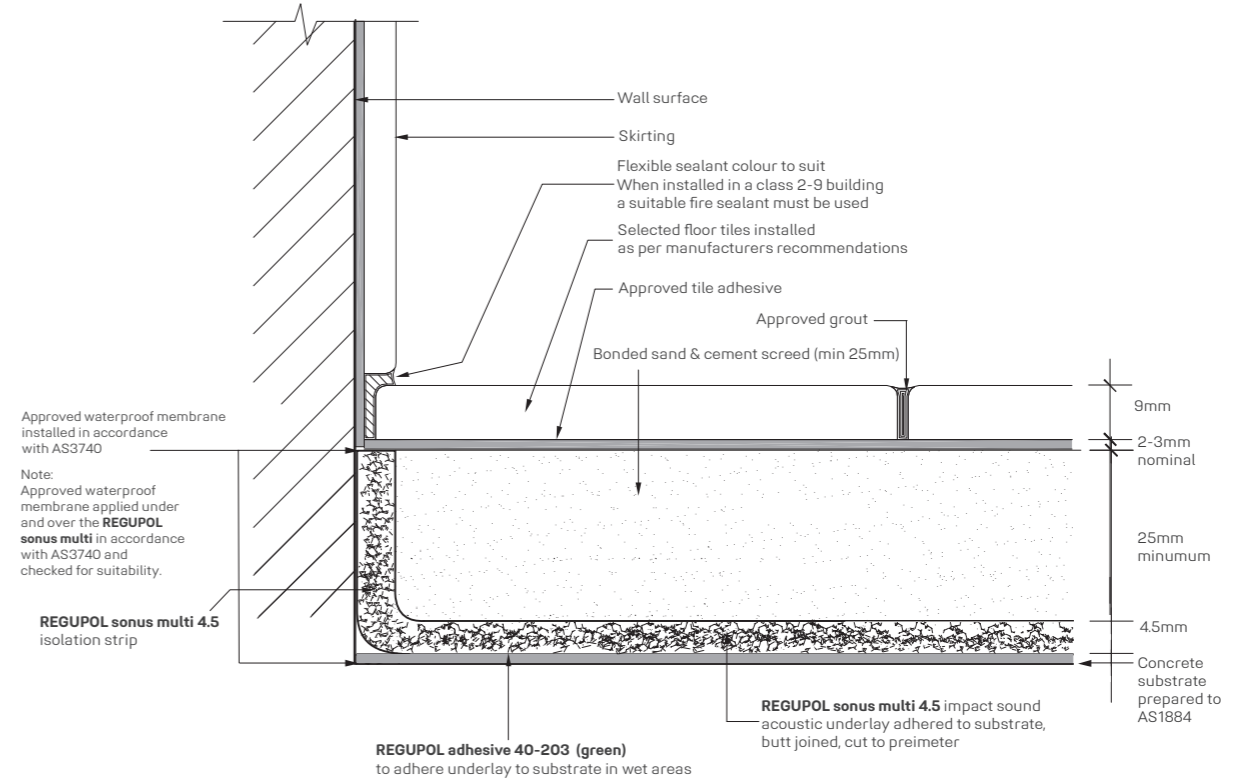
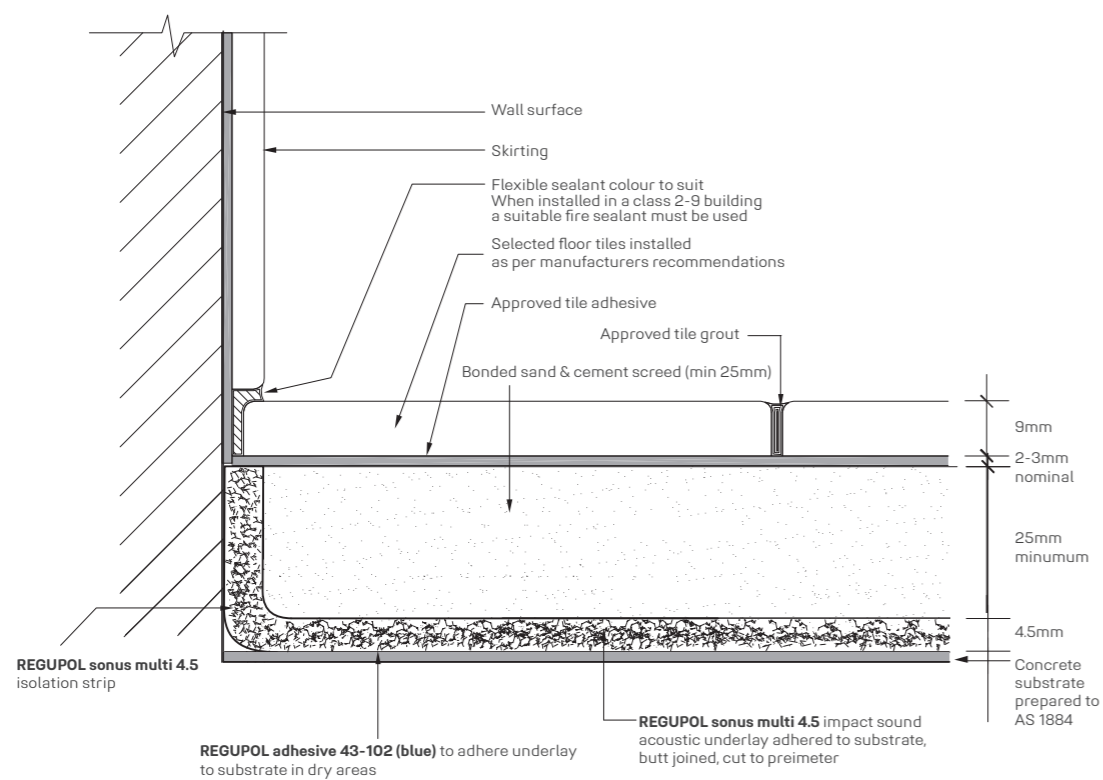
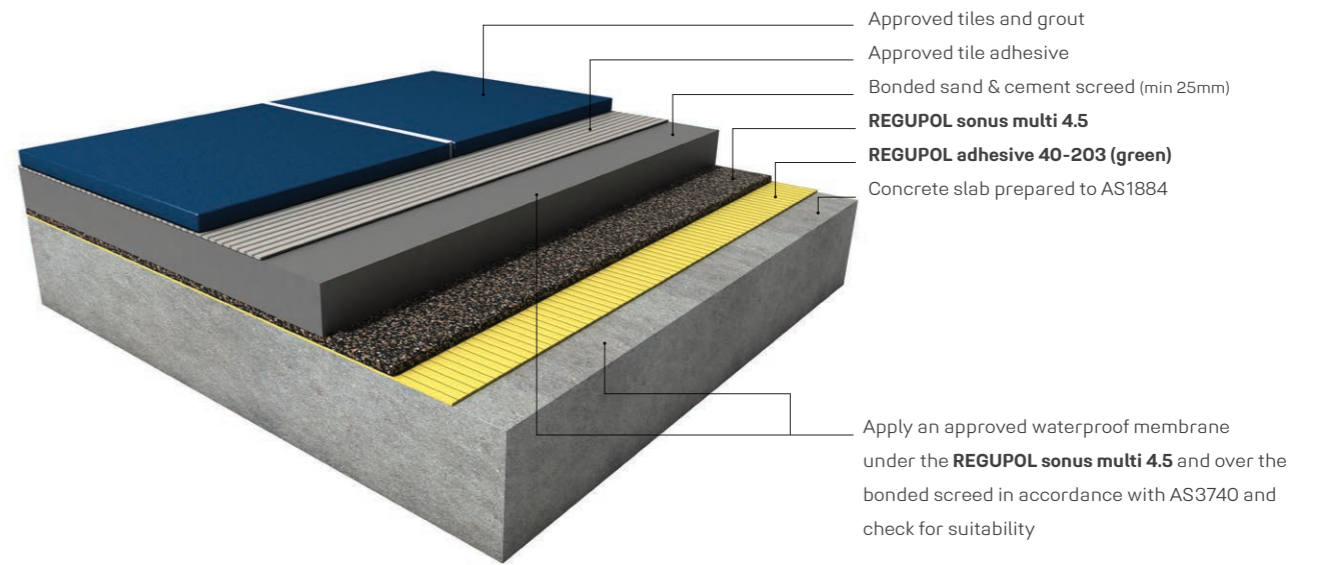
DRY AREA BONDED SCREED & TILE

This **REGUPOL sonus multi 4.5** system reflects a typical residential application with approved screed beds. For all other applications please contact **REGUPOL** acoustic division. Please note that drawings are not to scale and are for illustration purposes only.

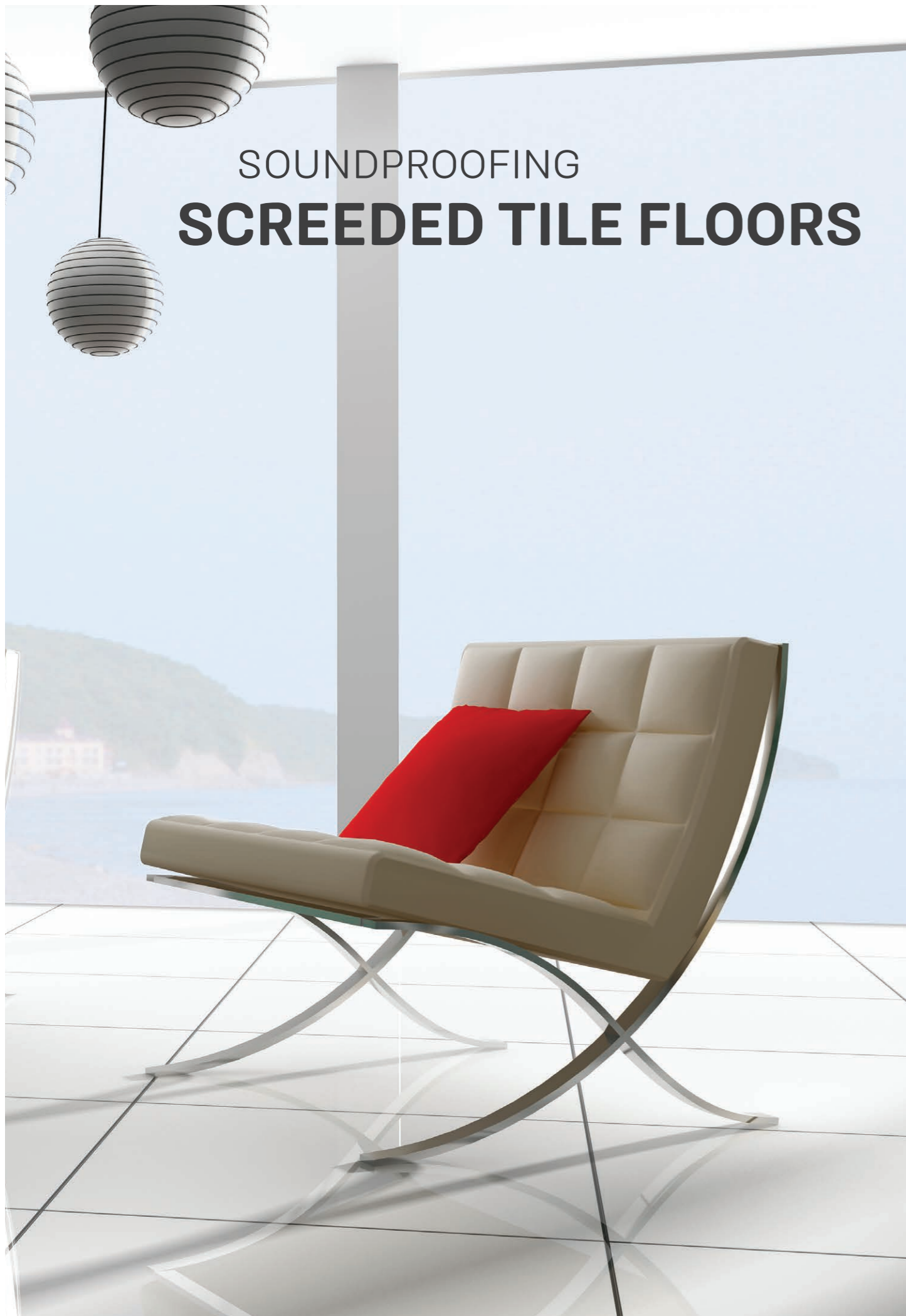


WET AREA BONDED SCREED & TILE

This **REGUPOL sonus multi 4.5** system reflects a typical residential application with approved screed beds. For all other applications please contact **REGUPOL** acoustic division. Please note that drawings are not to scale and are for illustration purposes only.



SOUNDPROOFING SCREEDED TILE FLOORS



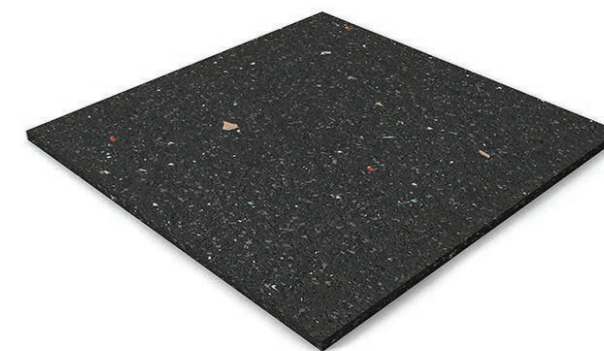
REGUPOL SONUS CORE 5

REGUPOL sonus core 5 is a high performance acoustic underlay, designed to reduce the transmission of impact sound generated by footfall noise.

Suitable for green buildings, the REGUPOL sonus core 5 is a sustainable product made from post-consumer end of life tyre bound with polyurethane.

This environmentally preferable product has been independently certified as meeting the requirements of Good Environmental Choice Australia GECA 25-2011 v2.0i - Floor Coverings Standard. See www.geca.eco

REGUPOL sonus core 5 can be installed under bonded and unbonded screed beds, laminate and engineered timber floors. All applications should be checked for suitability with the selected floor finish, waterproof membranes, REGUPOL adhesives, tile adhesives, grouts etc.



Available in:

Rolls 1.25m x 10lm, 50lm
Thickness 5mm



ACOUSTICAL PERFORMANCE

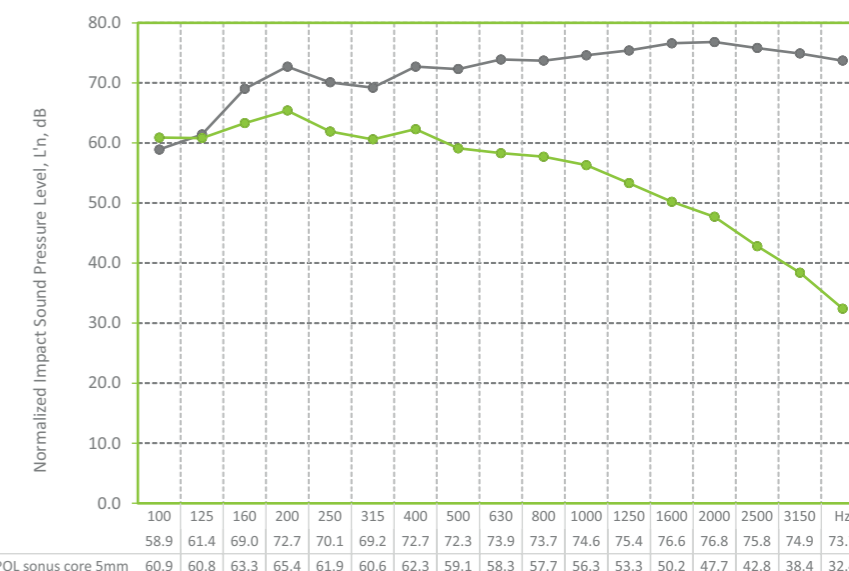
TILE WITH SCREED Normalized Impact Sound Pressure Levels

Tested at CSIRO Clayton, in accordance with ISO 140-8: 2006 (E), ISO 140-6-2006, AS ISO 717.2-2004, ASTM E989-89. Test area 10.8m². Results can vary when different floors are installed and/or if bonded.

REPORT RG092

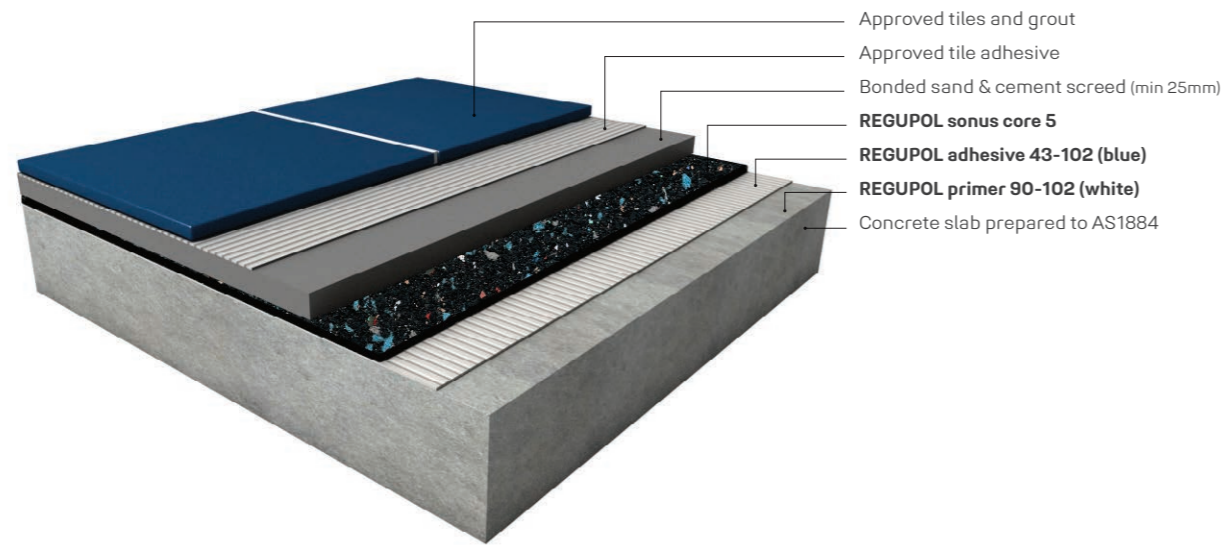
Layer of 8mm Ceramic Tile bonded to 30mm Screed Bed, to REGUPOL sonus core 5mm, to 150mm Concrete Slab (no ceiling).

$L_{n,w}$ 58dB
 ΔL_w 21dB
52 IIC



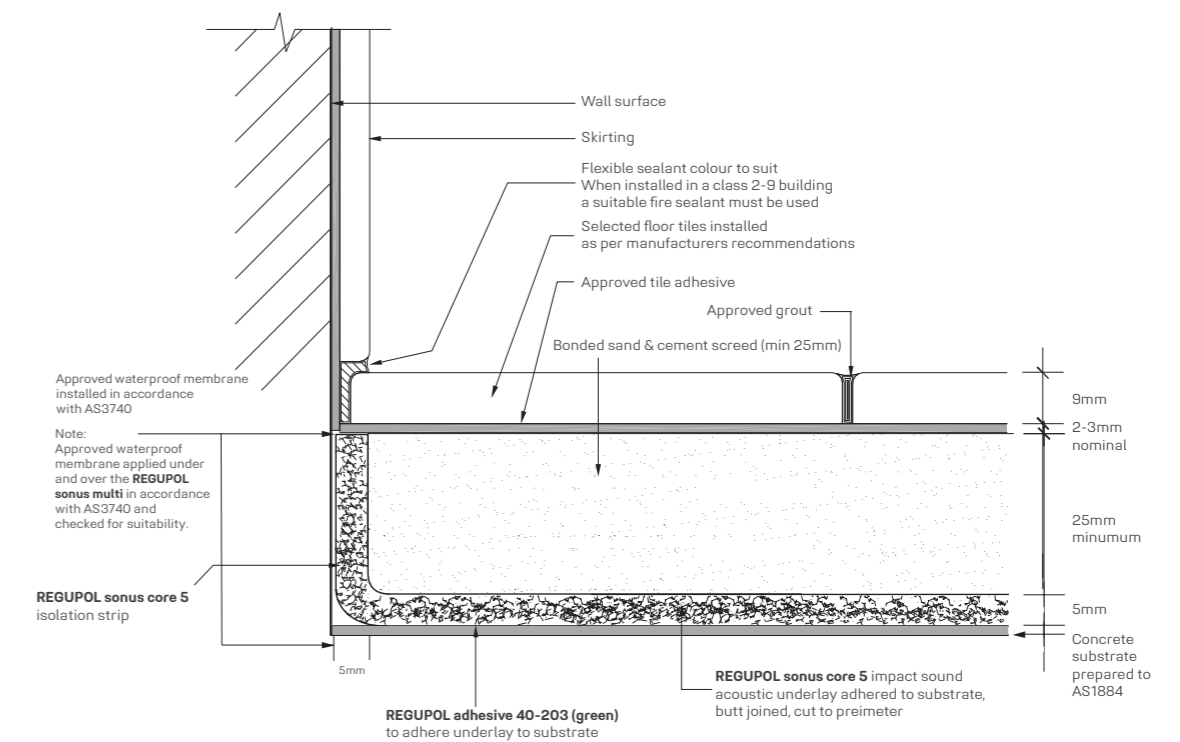
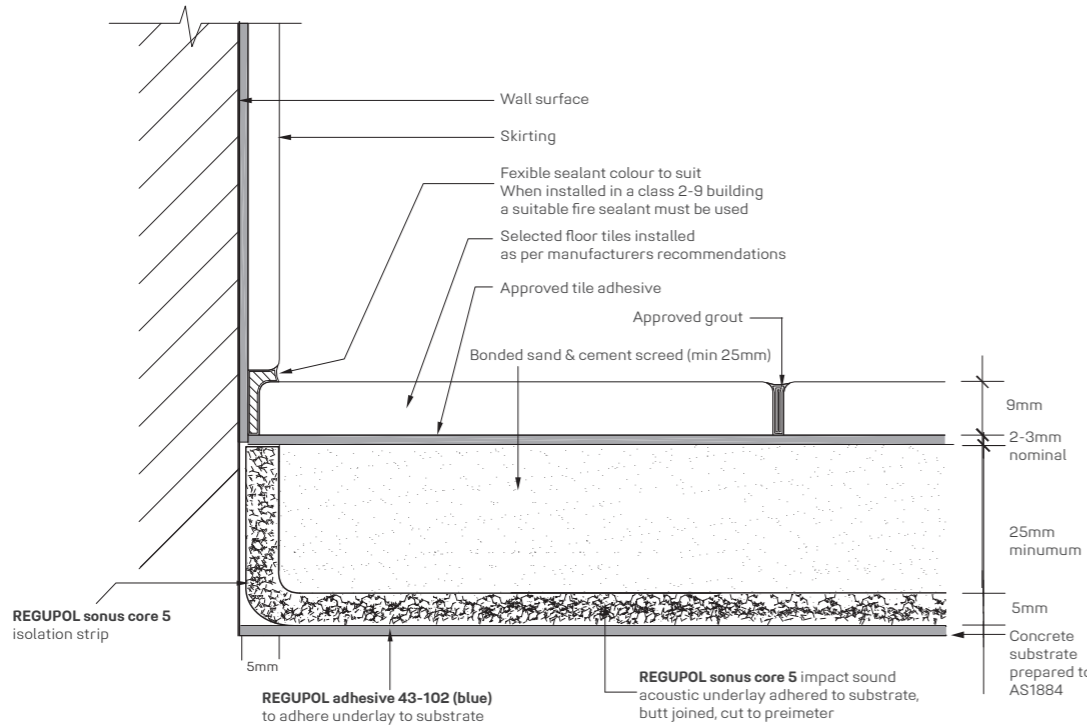
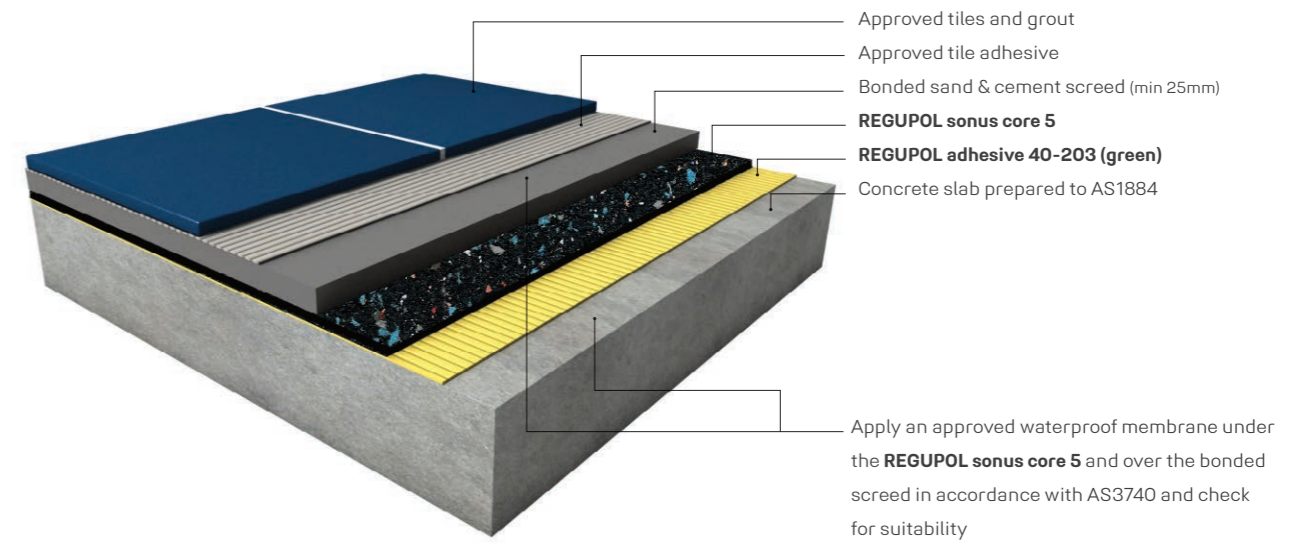
DRY AREA BONDED SCREED & TILE

This **REGUPOL sonus core 5** system reflects a typical residential application with approved screed beds. For all other applications please contact **REGUPOL** acoustic division. Please note that drawings are not to scale and are for illustration purposes only.



WET AREA BONDED SCREED & TILE

This **REGUPOL sonus core 5** system reflects a typical residential application with approved screed beds. For all other applications please contact **REGUPOL** acoustic division. Please note that drawings are not to scale and are for illustration purposes only.



SOUNDPROOFING SCREEDED TILE FLOORS



REGUPOL SONUS CURVE 6

REGUPOL sonus curve 6 is a high performance acoustic underlay, designed to reduce the transmission of impact sound generated by footfall noise.

Suitable for green buildings, the **REGUPOL sonus curve 6** is a sustainable product made from post-consumer end of life tyre bound with polyurethane.

This environmentally preferable product has been independently certified as meeting the requirements of Good Environmental Choice Australia GECA 25-2011 v2.0i - Floor Coverings Standard. See www.geca.eco

REGUPOL sonus curve 6 can be installed under bonded and unbonded screed beds as a complete system with stone,

marble, tiles or selected floor coverings. Also suitable as a system under cement sheeting or plywood sheeting with selected floor coverings such as solid timber and approved engineered timber floors. All applications should be checked for suitability with the selected floor finish, waterproof membranes, **REGUPOL** adhesives, tile adhesives, grouts etc.



Available in:

Rolls	1.25m x 20lm
Thickness	6mm dimpled



ACOUSTICAL PERFORMANCE

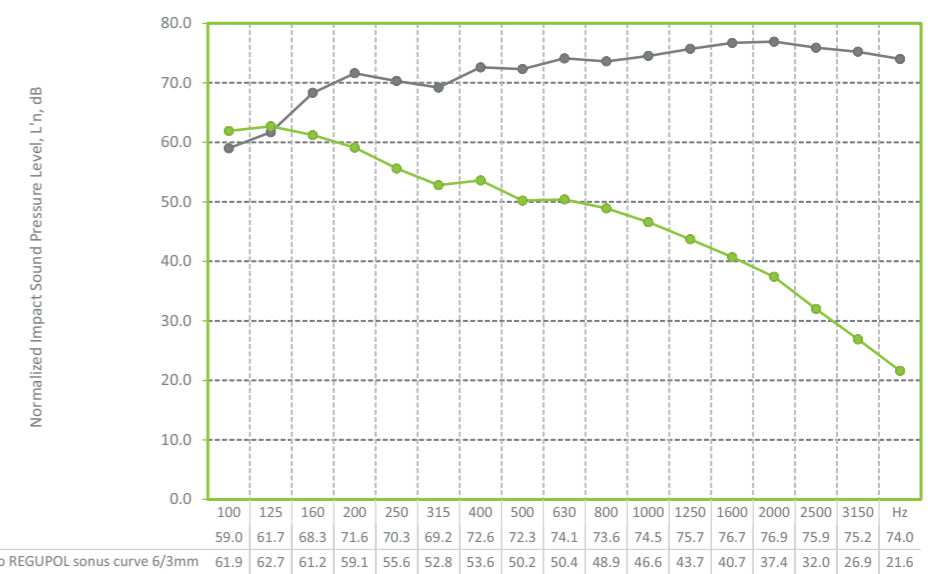
TILE WITH SCREED Normalized Impact Sound Pressure Levels

Tested at CSIRO Clayton, in accordance with ISO 140-8: 2006 (E), ISO 140-6-2006, AS ISO 717.2-2004, ASTM E989-89. Test area 10.8m². Results can vary when different floors are installed and/or if bonded.

REPORT RG095

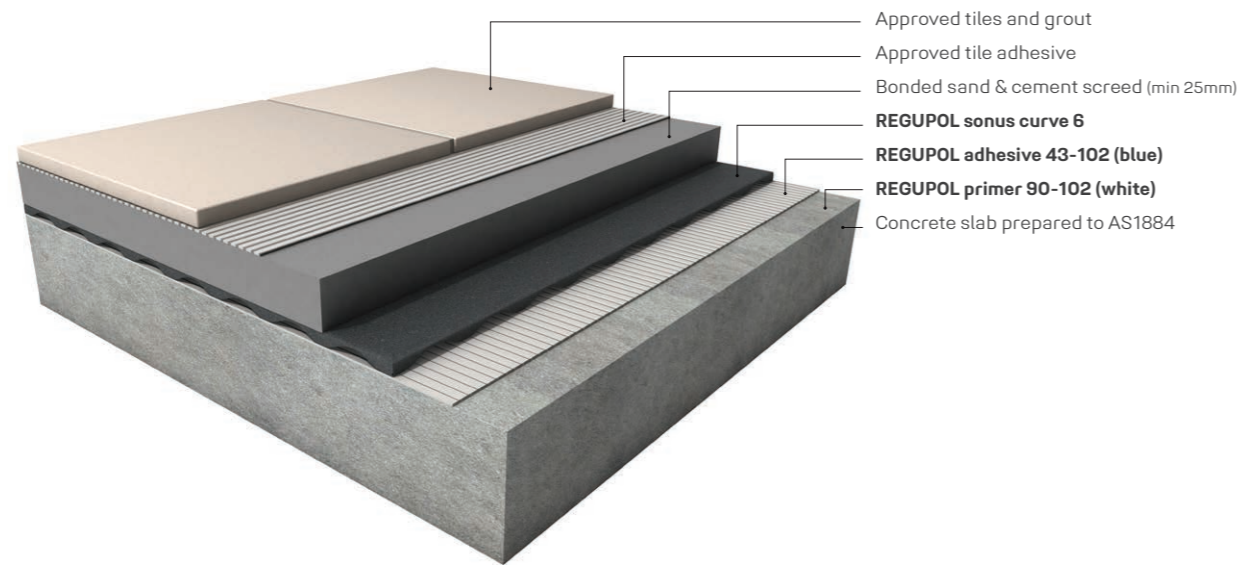
Layer of 8mm Ceramic Tile bonded to 30mm Screed Bed, to **REGUPOL sonus curve 6/3mm**, to 150mm Concrete Slab (no ceiling).

Ln,w 52dB ΔLw 24dB 57 IIC



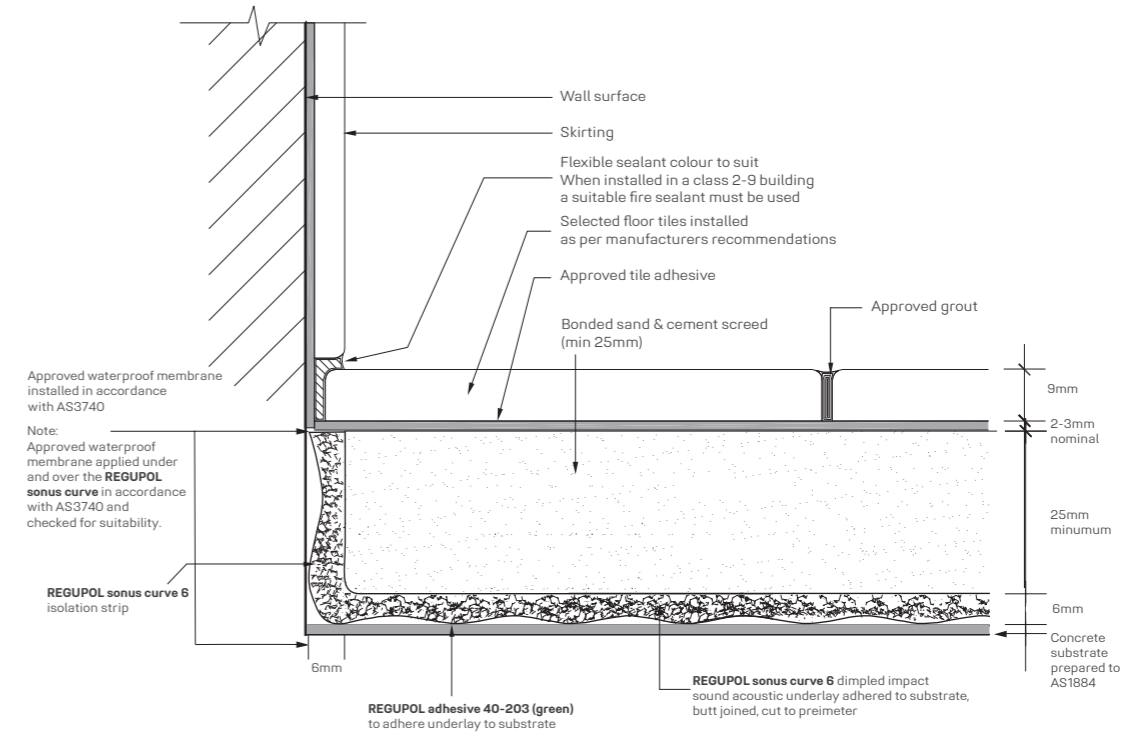
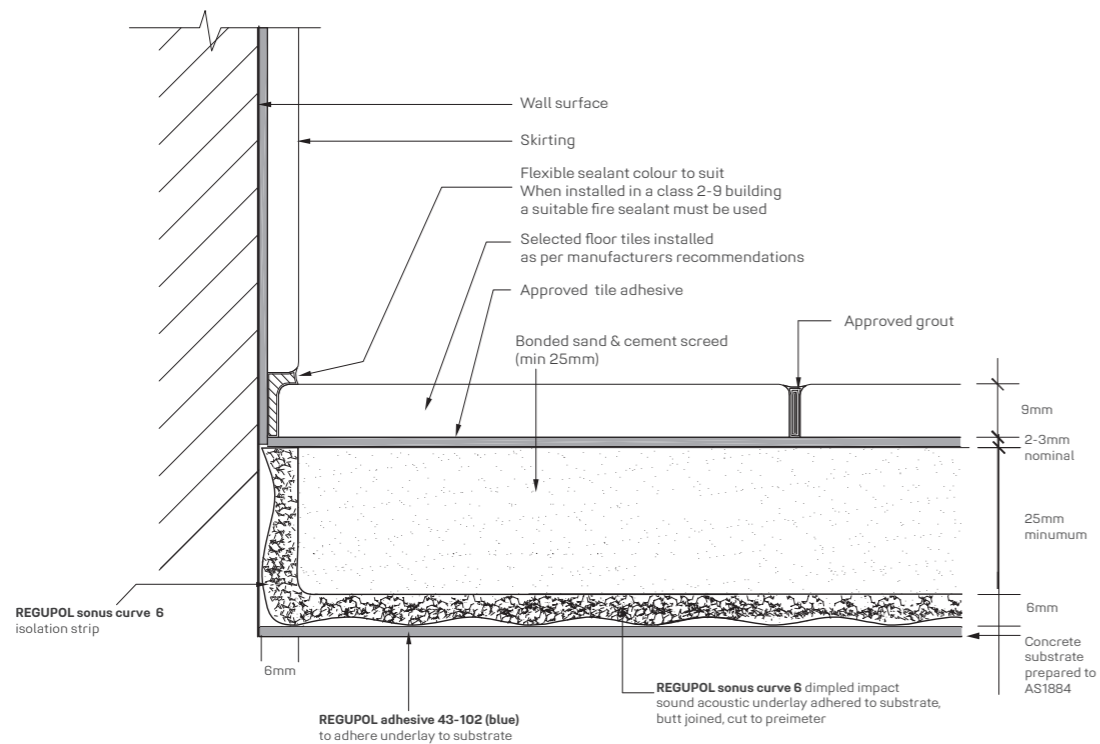
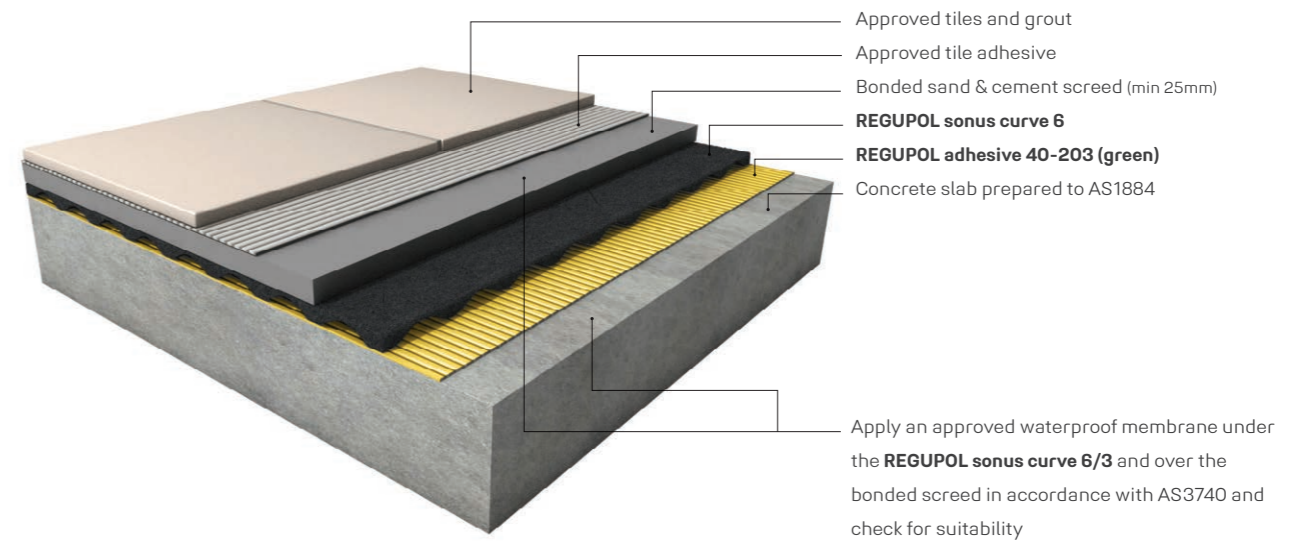
DRY AREA BONDED SCREED & TILE

This **REGUPOL sonus curve 6** system reflects a typical residential application with approved screed beds. For all other applications please contact **REGUPOL** acoustic division. Please note that drawings are not to scale and are for illustration purposes only.



WET AREA BONDED SCREED & TILE

This **REGUPOL sonus curve 6** system reflects a typical residential application with approved screed beds. For all other applications please contact **REGUPOL** acoustic division. Please note that drawings are not to scale and are for illustration purposes only.



SOUNDPROOFING SCREEDED TILE FLOORS



REGUPOL SONUS CURVE 8

REGUPOL sonus curve 8 is a high performance acoustic underlay, designed to reduce the transmission of impact sound generated by footfall noise.

Suitable for green buildings, the **REGUPOL sonus curve 8** is a sustainable product made from post-consumer end of life tyre bound with polyurethane.

This environmentally preferable product has been independently certified as meeting the requirements of Good Environmental Choice Australia GECA 25-2011 v2.0i - Floor Coverings Standard. See www.geca.eco

REGUPOL sonus curve 8 can be installed under bonded and unbonded screed beds as a complete system with stone, marble, tiles or selected floor coverings. Also suitable as a system under cement sheeting or plywood sheeting with selected floor coverings such as solid timber and approved engineered timber floors. All applications should be checked for suitability with the selected floor finish, waterproof membranes, **REGUPOL adhesives**, tile adhesives, grouts etc.



Available in:

Rolls	1.15m x 20lm
Thickness	8mm dimpled



ACOUSTICAL PERFORMANCE

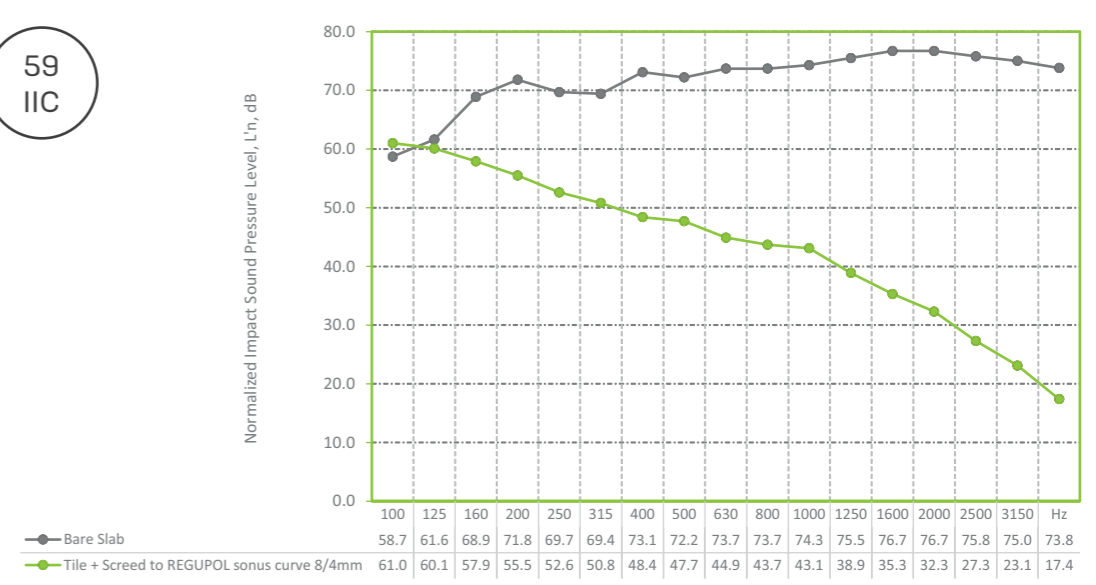
TILE WITH SCREED Normalized Impact Sound Pressure Levels
 Tested at CSIRO Clayton, in accordance with ISO 140-8: 2006 (E), ISO 140-6-2006, AS ISO 717.2-2004, ASTM E989-89. Test area 10.8m².
 Results can vary when different floors are installed and/or if bonded.

REPORT RG096
 Layer of 8mm Ceramic Tile bonded to 30mm Screed Bed, to **REGUPOL sonus curve 8/4mm**, to 150mm Concrete Slab (no ceiling).

Ln,w
50dB

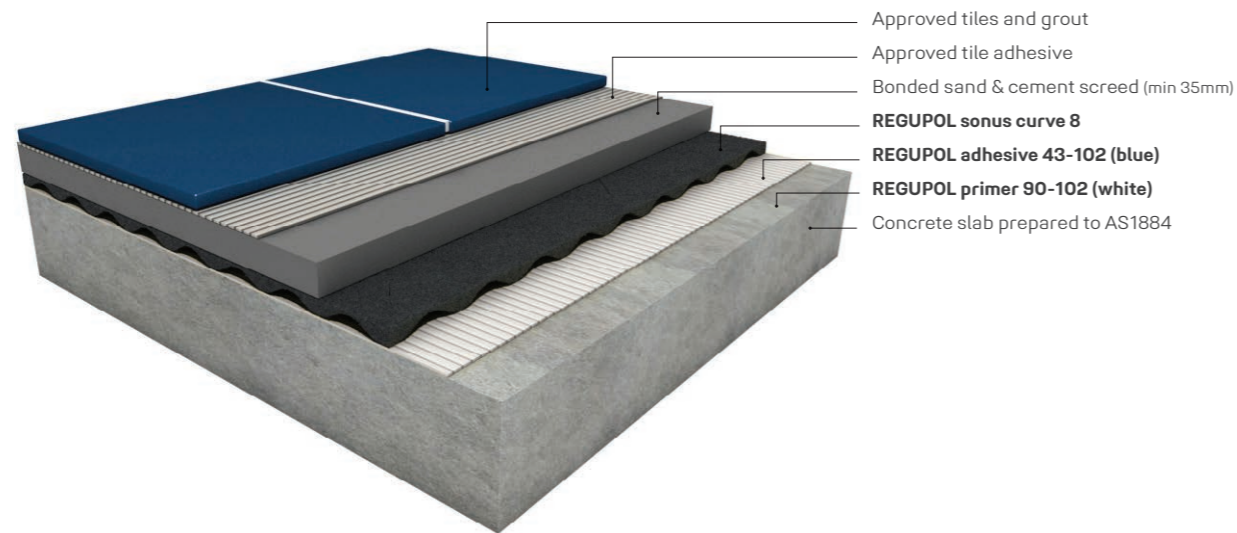
ΔLw
26dB

59
IIC



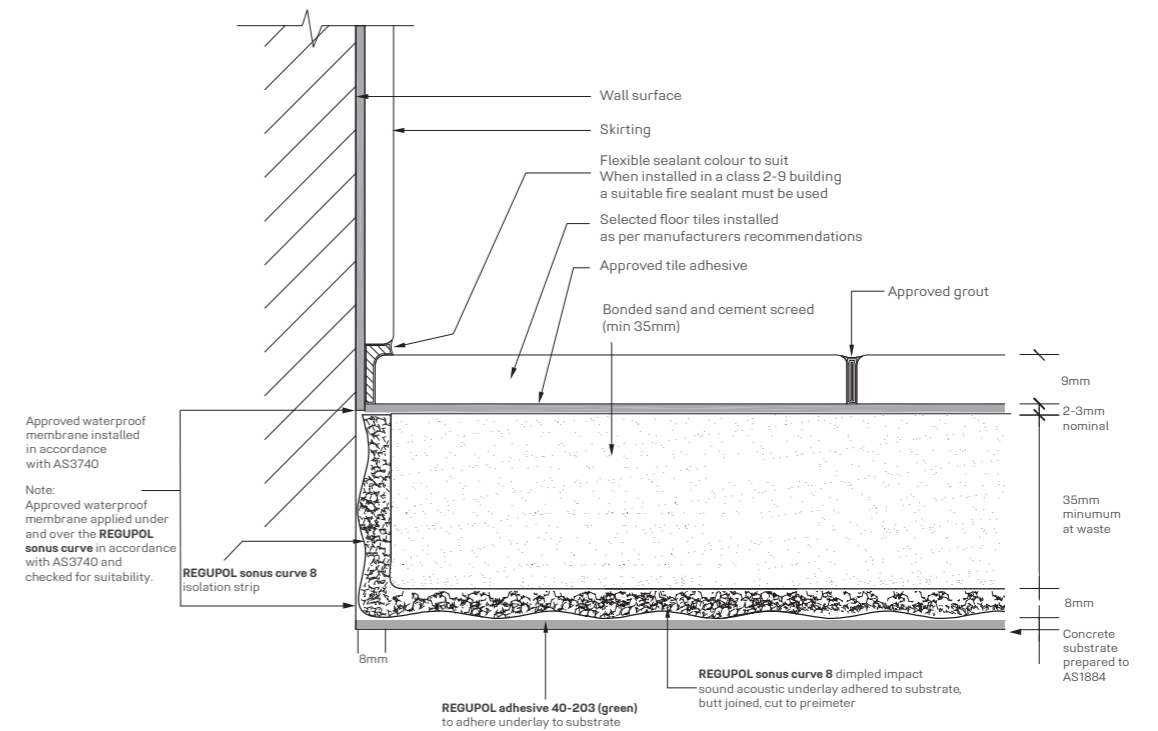
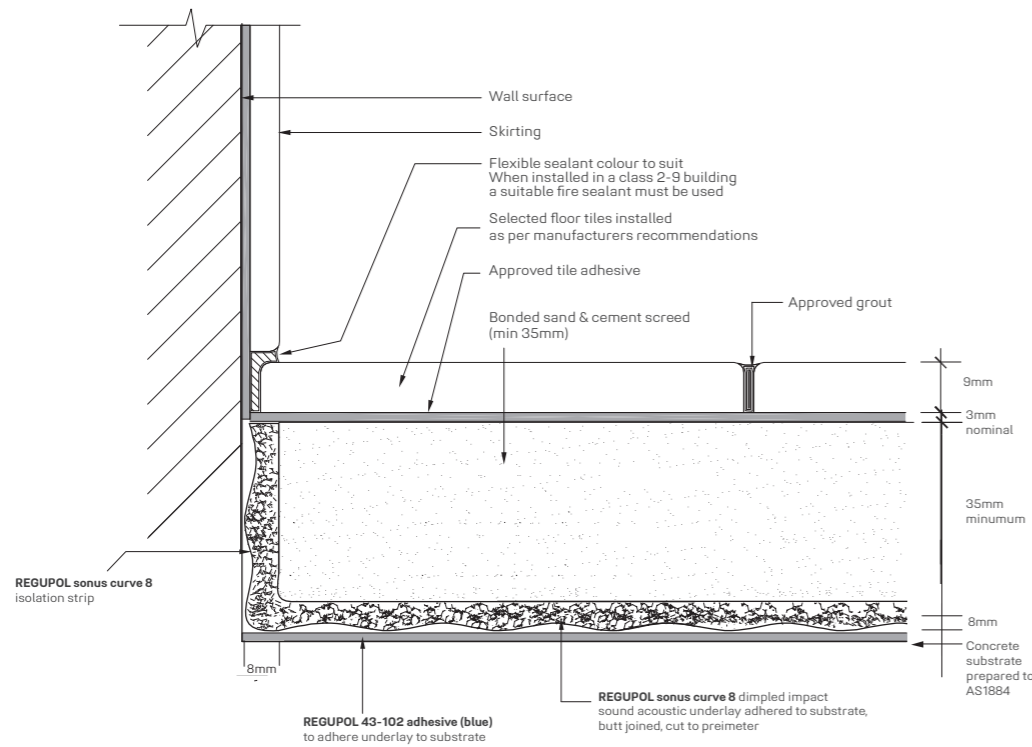
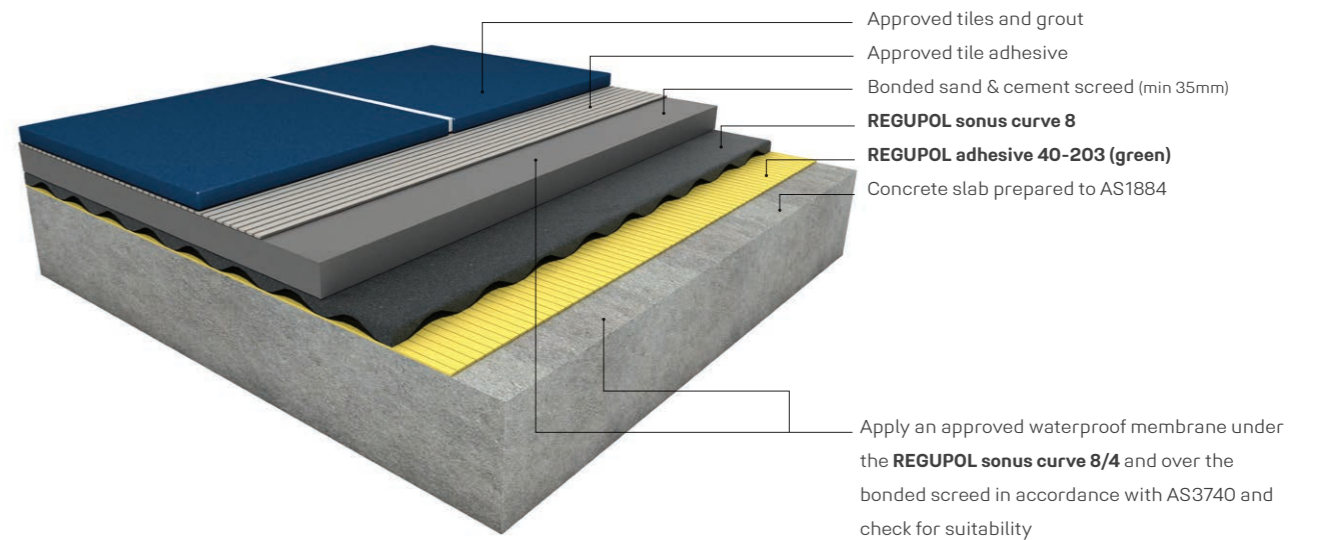
DRY AREA BONDED SCREED & TILE

This **REGUPOL sonus curve 8** system reflects a typical residential application with approved screed beds. For all other applications please contact **REGUPOL** acoustic division. Please note that drawings are not to scale and are for illustration purposes only.



WET AREA BONDED SCREED & TILE

This **REGUPOL sonus curve 8** system reflects a typical residential application with approved screed beds. For all other applications please contact **REGUPOL** acoustic division. Please note that drawings are not to scale and are for illustration purposes only.





REGUPOL SONUS CORE 10-S

REGUPOL sonus core 10-S is a high performance acoustic underlay, designed to reduce the transmission of impact sound generated by footfall noise.

Suitable for green buildings, the **REGUPOL sonus core 10-S** is a sustainable product made from post-consumer end of life tyre bound with polyurethane.

This environmentally preferable product has been independently certified as meeting the requirements of Good Environmental Choice Australia GECA 25-2011 v2.0i - Floor Coverings Standard. See www.geca.eco

REGUPOL sonus core 10-S can be installed under bonded and unbonded screed beds, laminate and engineered timber floors. All applications should be checked for suitability with the selected floor finish, waterproof membranes, **REGUPOL** adhesives, tile adhesives, grouts etc.



Available in:

Rolls	1.25m x 10lm, 20lm
Thickness	10mm



ACOUSTICAL PERFORMANCE

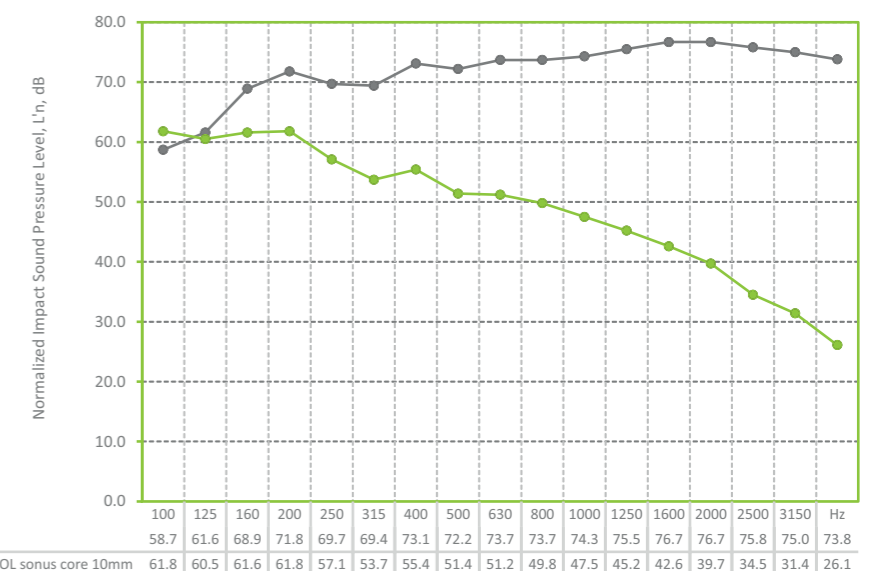
TILE WITH SCREED Normalized Impact Sound Pressure Levels

Tested at CSIRO Clayton, in accordance with ISO 140-8: 2006 (E), ISO 140-6-2006, AS ISO 717.2-2004, ASTM E989-89. Test area 10.8m². Results can vary when different floors are installed and/or if bonded.

REPORT RG097

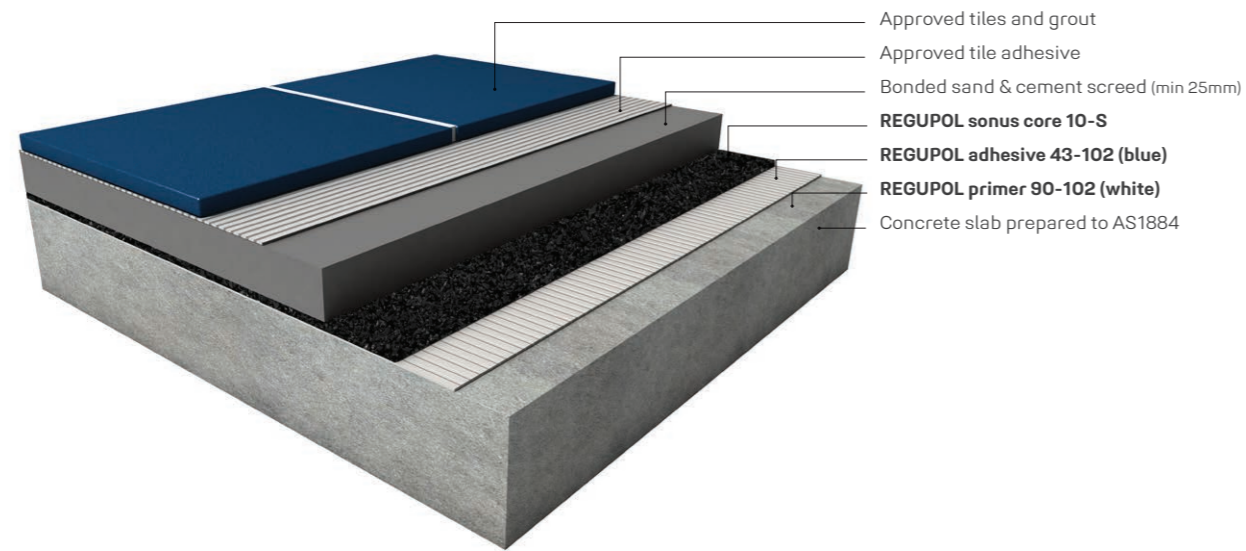
Layer of 8mm Ceramic Tile bonded to 30mm Screed Bed, to **REGUPOL sonus core 10mm**, to 150mm Concrete Slab (no ceiling).

$L_{n,w}$
53dB
 ΔL_w
23dB
57
IIC



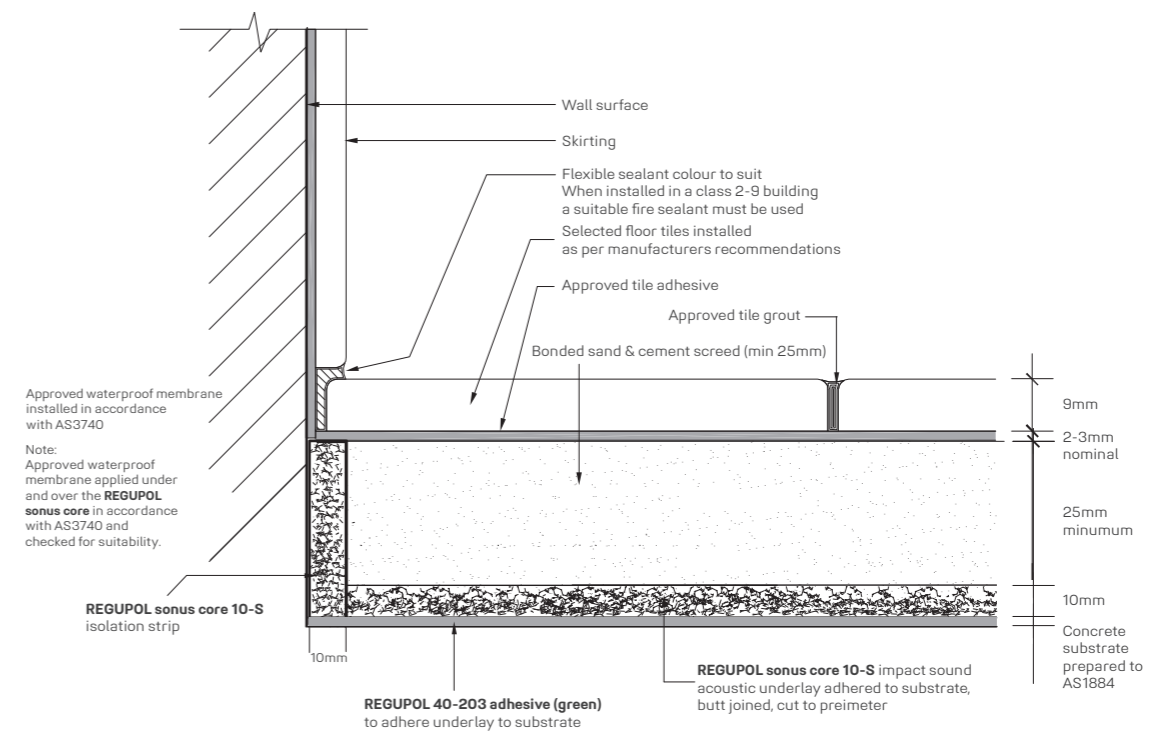
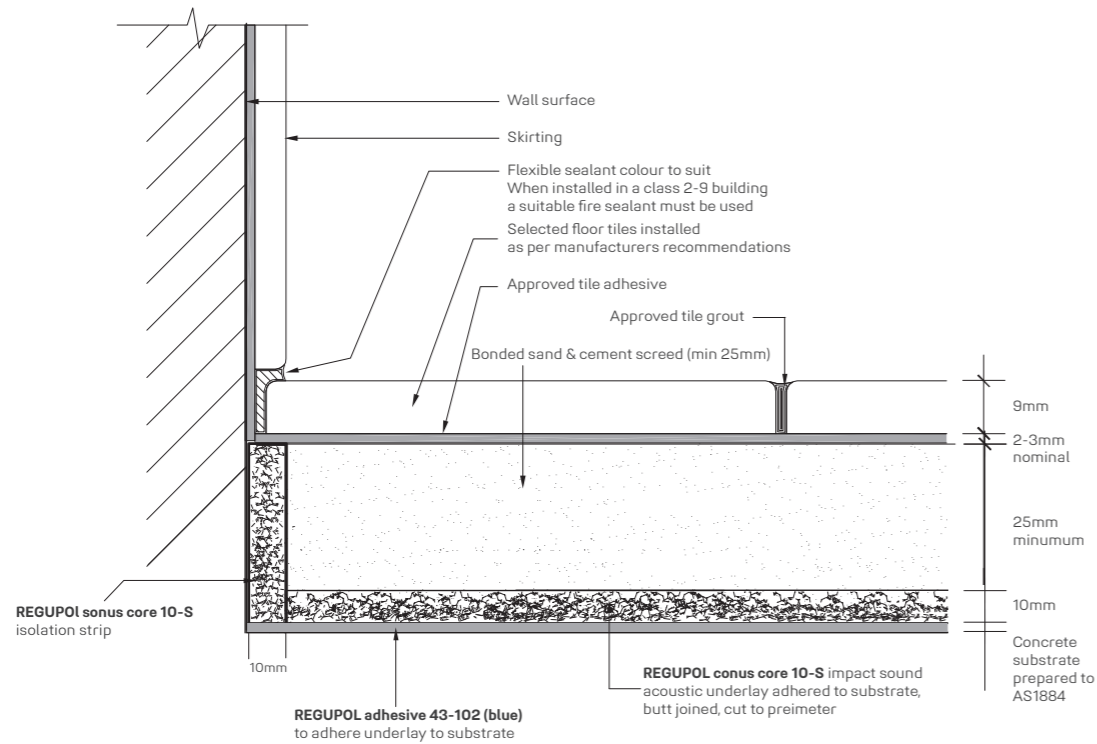
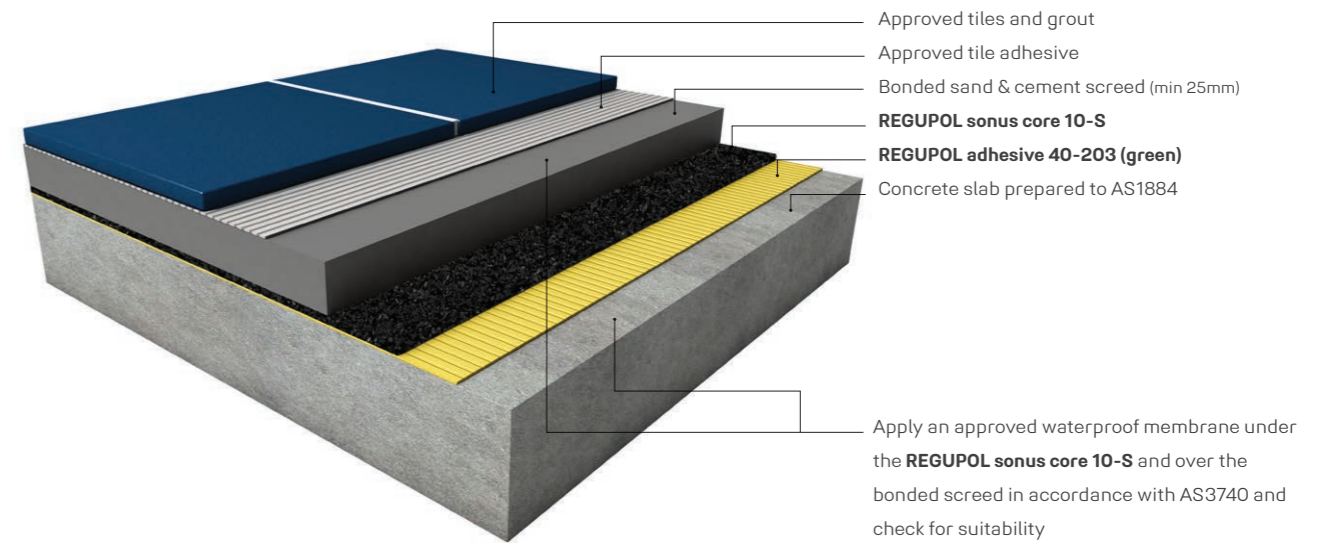
DRY AREA BONDED SCREED & TILE

This **REGUPOL sonus core 10-S** system reflects a typical residential application with approved screed beds. For all other applications please contact **REGUPOL** acoustic division. Please note that drawings are not to scale and are for illustration purposes only.



WET AREA BONDED SCREED & TILE

This **REGUPOL sonus core 10-S** system reflects a typical residential application with approved screed beds. For all other applications please contact **REGUPOL** acoustic division. Please note that drawings are not to scale and are for illustration purposes only.



REGUPOL AND THE ENVIRONMENT



GECA

The Good Environmental Choice Australia Ecolabel certification scheme is Australia's leading environmental certification program. GECA's Ecolabel trade mark indicates the environmental performance of a product has been certified from multi- criteria perspective. Products that carry the Ecolabel trade mark are certified environmentally preferable by GECA.

At **REGUPOL**, we are committed to offering you products that are safer for you and our planet. Our products **REGUPOL sonus core**, **REGUPOL sonus curve**, **REGUPOL sonus multi** and **REGUPOL sonus eco** ranges of floor impact sound insulation products are certified by GECA (Good Environmental Choice Australia), a certification that's awarded to products that adhere to strict environmental, health and ethical standards. GECA certification is testimony to our dedication to creating sustainable products that don't affect your health and minimize their impact on the environment as far as possible.

"GECA is proud to have REGUPOL as one of its longest-standing licensees, who are leaders in their industry and committed to a sustainable future.

Their GECA certified products attribute to many green building programs including, GBCA's Green Star (Level A), WELL Building certification, ISCA's IS program as well as many procurement channels in government, education, hospitality, and healthcare".

Michelle Thomas, CEO, GECA

The independent verification performed by GECA shows that the certified products are environmentally preferable and meet the requirements of GECA 25-2011 v2.0i Floor Coverings Standard is recognised by the Green Building Council of Australia (GBCA) under their assessment framework for product certification schemes. The selected **REGUPOL** products will provide a level A sustainability factor weighting (100% within the Green Star Sustainable Products Material Category).

Many of the **REGUPOL sonus** products are GECA certified. Look for the Good Environmental Choice Australia tick to confirm the product has been independently certified. For more information on GECA visit www.geca.eco



NATSPEC

NATSPEC is the preferred specification system for building professionals. Government departments, contractors, consultants and architects endorse NATSPEC branded worksections.

Branded worksections are technical worksections developed by NATSPEC in conjunction with a manufacturer, known as a NATSPEC Product Partner. Each branded worksection is based on the associated NATSPEC generic worksection and shares the same classification number. It is a MS Word document template which follows the NATSPEC style and can be customised.

REGUPOL are proudly a NATSPEC Product Partner, offering a national specification for our **REGUPOL sonus core**, **REGUPOL sonus curve**, **REGUPOL sonus multi**, **REGUPOL sonus eco** ranges of acoustic floor underlays.

Save valuable time by downloading the **0473 REGUPOL in acoustic floor underlays NATSPEC branded worksection today** via the NATSPEC website www.natspec.com.au

The **REGUPOL** branded worksection will assist you in specifying the **REGUPOL sonus** acoustic underlays with various floor finishes such as resilient/vinyl floors, timber floors, tiled floors and screeds.



GBCA

We are proud to have been members of the Green Building Council of Australia for over 10 years! As a long-term supporter, we have helped to deliver healthy, resilient and positive places.

We take sustainability seriously and we are proud to be a long standing GBCA member to share our expertise, influence industry and learn from one another.

These **REGUPOL** acoustic systems are typical residential applications and are not exhaustive of our products and their applications. Many other systems are available for specific projects and acoustic outcomes. Contact us for further resources and access to our acoustic library of products and testing data.



MADE IN GERMANY





HOW ARE SOLUTIONS EASY AND INSPIRING? **TOGETHER.**

We've got it covered.

REGUPOL is more than sports and multi-purpose surfaces. More than our acoustic underlayments. And more than our state-of-the-art track and field surfaces. For over 65 years, providing solutions and delivering exceptional customer service has been our business. We understand that paying attention to the details is critical from the start of any project. Making changes later means inconvenience and additional expenses. We sweat those details so you don't have to.

Because we invented the technology to recycle end of life tyres into unique products, you benefit from decades of experience and expertise that only we can offer. That means the right information, advice, and answers when you need them, along with products that have been refined, tested, and retested over the years by our R&D team to deliver precision performance that will not disappoint. It is all accomplished with manufacturing that meets the highest quality standards with the strictest environmental requirements.

Delivering results, developing leaders worldwide

We have grown steadily since 1954 – new products developed, new subsidiaries established and new locations added.

Today, **REGUPOL** is still a family enterprise, with third and fourth generations currently working in company management. We have eleven offices in seven countries, all serving as epicentres for innovation, ingenuity, and community.

Behind every **REGUPOL** product, there is a talented team that works together, across the globe, to create performance solutions from reclaimed materials that deliver durability and protection where you need it most without sacrificing sustainability. Whether used to protect surfaces and optimize load transport or to dampen sound and vibration, **REGUPOL** gets it done. We deliver with a level of product, customer service, and investment that only the inventor can offer.

No matter the customer—we aim to make their experience easy and inspiring, at an only-at-**REGUPOL** value.



Ask the experts about the best solution for your project.
REGUPOL Australia +61 2 4624 0050
acousticsales@regupol.com.au

HOW DO YOU BECOME MORE ENVIRONMENTALLY FRIENDLY? TOGETHER.

Caring about the environment is part of the REGUPOL core mission. When it comes to how we conduct our business and develop our products, we think long term. We ask ourselves: How will our actions today impact tomorrow's world? We strive to protect and sustain our environment every step of the way, from development and production to customer use and disposal.

On the road, tyres eventually wear down or sustain irreparable damage. But, in the environment, tyres can last forever. They are nonbiodegradable, unable to be compacted like plastic or metal, and maintain their shape. Because of their sheer size and impenetrable rubber compound, tyres are among the most problematic sources of waste we face today.

In the 1950s, polyurethane foam was new and very expensive. Instead of using all of the material produced, a considerable quantity was disposed. Our company was founded in 1954 to reprocess this wasted material into composite foam. Recycling is in our DNA.

How sustainable are REGUPOL products?

The circular economy works when recycled products compete directly with new products – we have been proving this for 65 years. REGUPOL products are typically made from 75% to 95% recycled materials, as are our sports mats. However REGUFOAM products are made from genuine raw materials.

What standards and legal requirements does REGUPOL meet?

Our company has been fully DIN EN 14001 certified since 1997 and will remain so. In addition, our products and mats comply with paragraph § 45 II No. 2 of the German draft bill on recycling management. We hope that the clearly formulated regulation will help make government action more sustainable.



What is sustainable about our human resources policy?

All our staff in Germany are paid according to a chemical industry-wide collective agreement. We are a recognised provider of insulation solutions and attach particular importance on training, which is why a large number of trainees undergo their training in-house.

New Life: From the disposing to a recycling economy

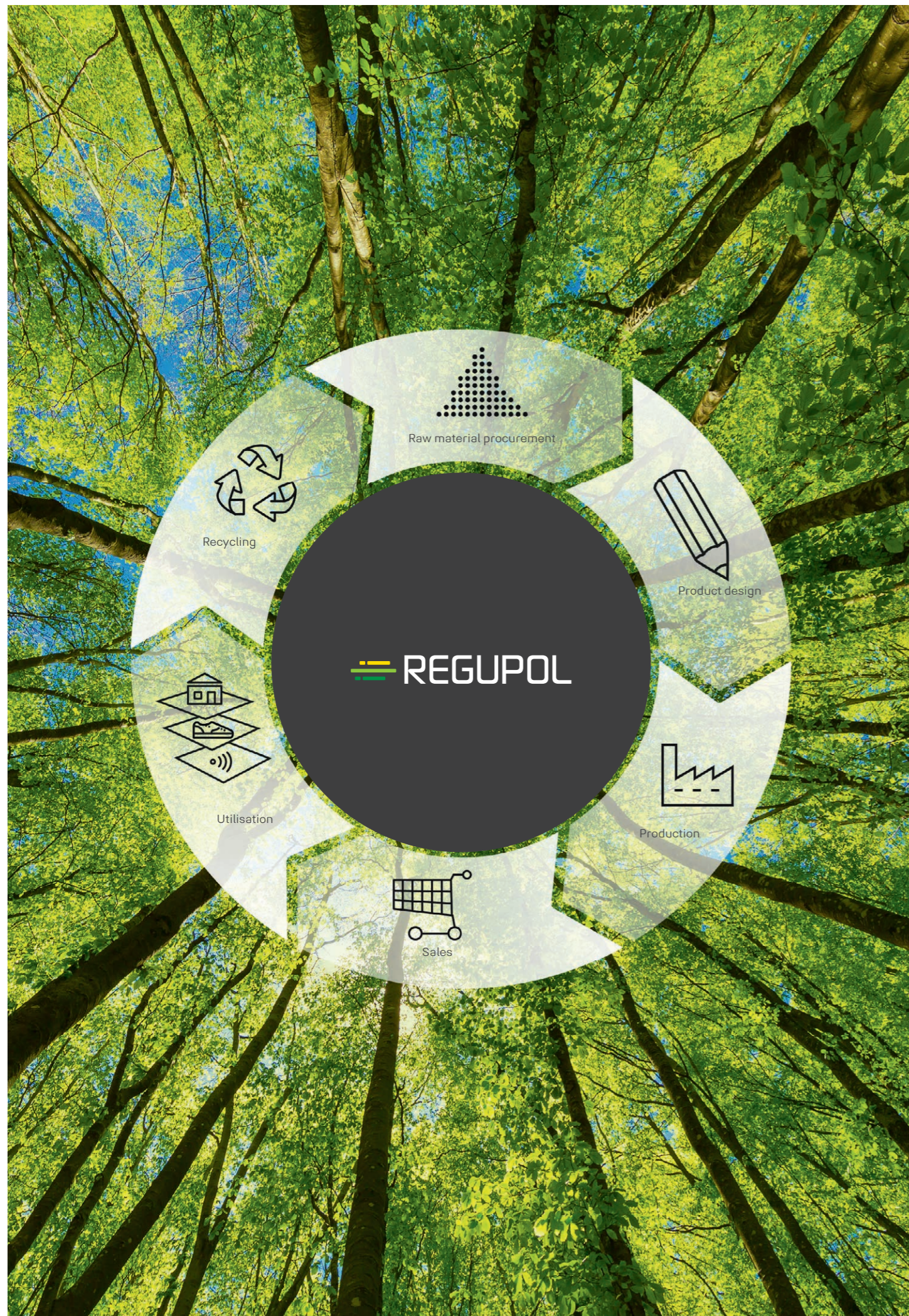
REGUPOL is a founding member of the "Initiative NEW LIFE" and commits to an optimal recycling economy, together with the other member corporations. Jointly, the members want to point out the advantages of recycling products from ELT (End-of-Life-Tires) and motivate to act sustainably. More about the initiative: www.initiative-new-life.de

What is next?

We still have a lot to do. We look forward to the continued development to our take-back policies for our products and reprocessing them. This will significantly extend the useful life of our products and consume far fewer natural resources. Accompany us.

REGUPOL's CO₂ balance sheet

In 2016, we partnered with the NRW Efficiency Agency to create a CO₂ location balance sheet, showing our total greenhouse gas emissions as CO₂ equivalents. We are on the right track.





HOW DO YOU GET TO THE TOP? **TOGETHER.**

When you partner with REGUPOL, you become part of a community with a shared goal of leading with excellence and innovation. Our path to success has always been rooted in product innovation and great service, with an eye on the future. We transform over 90,000 tons of high-quality recycled materials every year to create products that meet and exceed industry standards.

Over the course of our 65-year journey to become a leader in our category of building materials, we have built up a wealth of expertise and forged long-term customer partnerships in 132 countries worldwide—like sprint legend Usain Bolt, who made history on our blue REGUPOL running track in Berlin's Olympic Stadium in 2009 when he set two world records.

"There's nothing like running on REGUPOL. To me, REGUPOL equals gold. In more ways than one." - Usain Bolt

We've got it covered.



700 employees

11 locations worldwide

90.000 tons of high-quality recycled materials per year

132 countries with satisfied customers





REGUPOL Australia Pty. Ltd.
155 Smeaton Grange Road
Smeaton Grange NSW 2567
phone +61 2 4624 0050
acousticsales@regupol.com.au

REGUPOL BSW GmbH
REGUPOL America LLC
REGUPOL Acoustics Middle East FZE
REGUPOL Schweiz AG
REGUPOL Zebra Athletics LLC
BSW Shanghai CO. LTD.

www.regupol.com.au