

A red Budweiser beer cart is positioned on a light-colored wood-grain laminate floor in a store. The cart has 'Budweiser' and 'SPAR-HWL' printed on it. The background shows blurred shelves of a store.

**R-Tile**<sup>TM</sup>  
Flooring Solutions

# Design Collection

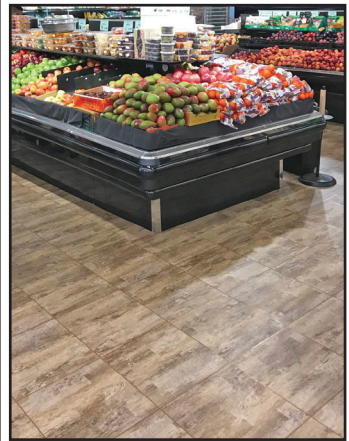
---

**Wood**

R-Tile a Product Range brought to you by

**R-Tek**<sup>TM</sup>  
Manufacturing

**Patented new generation of robust, hidden interlock, loose lay LVT. Available in modern designs and with unique colour matching moulded grout edging.**



Vintage Sand

## Dimensions

■ 457mm x 457mm (inc. 2mm grout edging) ■ 7.8mm Thickness ■ 0.7mm wear layer with PU





Vintage Ash



Dark Oak

Vintage Maple

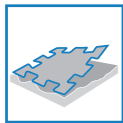
## Product Details



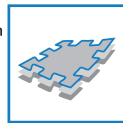
Loose lay - No adhesive required



Robust hidden interlock - Suitable for wheeled traffic up to 1000kg



No subfloor preparation - Can be installed over existing floor coverings, also poor and uneven sub floor



High dimensional stability - Heterogeneous construction with glass fiber reinforcement



Improves acoustic performance - Providing significant noise reduction.



No need to interrupt daily business activity - No loss of revenue



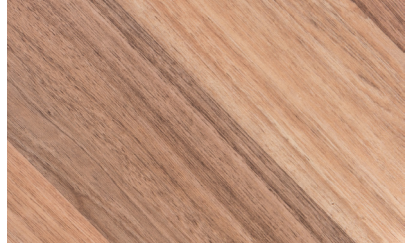
Excellent anti fatigue properties - Comfortable to walk and stand on.



Low VOC emissions meet AgBB requirements, DIBT (Germany) and all indoor air quality (France) (A\* label)



22003: Dark Oak



22001: Light Oak



78720: Vintage Ash



78719: Vintage Sand



78714: Vintage Maple

## Grout Edging Colours



Black



Light Grey



Brown



Profile Edge



Vintage Sand

## Installation & Cleaning



Loose lay -  
No adhesive required  
Installation instructions  
available on request.



Easy replacement  
or repair of  
individual tiles



Easy cleaning and  
maintenance due  
to PU coating



CE EN14041:2004

EN 14041,  
EN 13893

EN 430

EN 1815

EN 429

EN 427  
EN 994

EN 428

EN 13501-1

EN 105-802

EN 433

EN 423

EN 425

EN 660-1  
EN 660-2

EN 423

# Specification

TECHNICAL SPECIFICATION	NORM	DESIGN TILE
Floorcovering to EN 649		Heterogeneous PVC
Tile Dimensions		457mm x 457mm
Weight	EN430	9.6kg/m <sup>2</sup>
Hardness	ISO868	92 Shore A
Material		PVC SGI 1.45
Thickness	BS EN 428	7.8mm
Wearing Layer	BS EN 429	0.7mm + Polyurethane
Protective Layer		Polyurethane Matt Finish
Usage Class	EN 685	Heavy Commercial/light Industrial
Castor Wheel	BS EN 425	No Damage
Indentation	BS EN 433	0.05mm
Fire Class	EN 13501 -1	BFL s1
Surface Resistance	BS EN 1081	Horizontal: >1.0 x 10 <sup>4</sup> Ω Vertical: 1.1 x 10 <sup>12</sup> Ω
Anti Slip	BS EN 13893 Deutsche Norm DIN 51130	R9/R11
Chemical Resistance	BS EN 423	Good
Light Fastness [Blue Wool Standard]	BS EN 105-B02	6-8 Dependent on design
Thermal Resistance	ISO 8302	+/- 0.013m <sup>2</sup> K/W
Anti-Static Performance	BS EN 1815	Rubber sole: -1.0kV PVC sole: -1.7kV
Dimensional Stability Before Exposure to Heat	BS EN 434	Yes
Density	BS EN 436: 1994	Average 1404kg/m <sup>2</sup>
Surface Treatment	PUR	PUR
Toxicity	EN71	Non-Toxic
VOC Emissions	AgBB/DIBt	Certified

## Recyclable

The R-Tek range of tiles are environmentally friendly, once they have reached the end of their useful life we can collect the tiles and recycle them to produce the next generation of R-Tile. There is also no wastage in the manufacture of R-Tiles as any rejected tiles and surplus material is recycled on site.

## BRE - Green Guide Ratings A+

**R-Tek**<sup>™</sup>  
Manufacturing