

**Jacobsen**<sup>®</sup>

brings you

**ShawContract**<sup>®</sup>

**NZ & AU Catalogue**

June 2023

# Contents

- 3 Who is Jacobsen?
- 4 Who is Shaw Contract?
- 5 Why Jacobsen chose Shaw Contract
- 6-20 In Stock New Zealand
- 21 Quick Ship products (5-6 week lead time)
- 22-49 High design for impact with new collection releases
- 50-51 Add some colour and interest for way finding and branding
- 52 Charcoals and greys ideal for a neutral scheme or base build
- 53 Protect your investment with entrance tiles
- 54-63 Resilient options for reception and break out areas
- 64-67 Material health
- 68 Contacts page



# WHO IS JACOBSEN?

Jacobsen is a family-owned business passionate about flooring. Our purpose is 'Inspiring Better Spaces for Life' and we are really proud of the role we play in creating spaces with our partners, suppliers and customers.

After 60 years of supplying the New Zealand market with the best, hand-selected flooring products from around the world, we believe that our longevity is a testament to the quality of our products, the strength of our partnerships, and the trust that our customers have placed in us.

## SERVICE

We have always been committed to providing outstanding service and technical expertise, so you can trust that we'll provide the guidance and support you need to ensure that you have the right product that is fit for purpose.

## WORLD-CLASS PRODUCT

We understand that every space is different, which is why we've partnered with top international brands to bring you an extensive range of flooring solutions suited to New Zealand's climates, building requirements and needs.

## BETTER FOR US, AND OUR CHILDREN

We remain committed to upholding the Jacobsen legacy and delivering world-class flooring solutions that are manufactured responsibly and sustainably, products that consider the impact it has on our planet at the time of manufacture and at the end of its life, whilst continuing to exceed our customers' expectations on performance, longevity and design.



# WHO IS SHAW CONTRACT?

Shaw Contract designs and manufactures modular carpet, broadloom and resilient products that give foundation to space and support people within it. Our human-centered approach to service combines mind, hand and heart with the goal to make a Smarter Impact for our clients in all that we do. Ours is an optimistic agenda that places power for positive change at scale in all our hands for people and planet. We're headquartered in Cartersville, Georgia with associates and operations all over the world.

## BE KNOWLEDGE LED

Being a knowledge-led brand means that when we approach our clients and end-users, we come asking questions so that we can create products and solutions that matter to them.

## BE HUMAN-CENTRIC

Floors give foundation to space and support people within it. We have a human-centred approach that combines mind, hand and heart. This approach applies to all areas of our culture, business and operation, and from person to product to planet. We are bigger than who we are and what we make.

## BE OPTIMISTIC

A Smarter Impact mindset recognises that everything is connected. As a global organisation, we have the power to make positive change for people and planet. Design is inherently optimistic. Designers dream of a future that doesn't yet exist, and work to bring that future to life. They see a path of opportunity, one where problems can be solved, constraints moved, policies evolved, and behaviour changed.

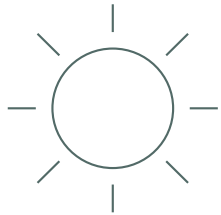






# WHY JACOBSEN CHOSE SHAW CONTRACT?

At Jacobsen, we only partner with the best manufacturers in the world. Which is why we are proud to have represented Shaw Contract products in the New Zealand market for over 15 years. We trust Shaw Contract's superior product design, their innovation and product integrity, and we respect the work they are doing to create a circular economy and their commitment to protecting our environment.



## CREATE HEALTHY WORKPLACES FOR YOUR CLIENTS

- Safe, healthy Cradle to Cradle® certified materials
- Maximum points on Greenstar & WELL certified projects
- Cost savings utilising global economies of scale
- LokDots reduce slab preparation costs for refurbishments
- LokDots allows installation on green slabs at 100% RH



## REDUCE LIFECYCLE OWNERSHIP COSTS

- Lifetime commercial warranty
- Guaranteed take back at end of product lifecycle at no cost
- LokDots allows simple tile replacement and immediate occupancy
- No Rules carpet collections with mergeable dye lots allow selective replacement



## REDUCE PROJECT COSTS

- VITS system reduces installation costs in occupied spaces
- Guaranteed take back at end of product lifecycle at no cost

## REDUCE PROJECT RISK

- World's largest yarn manufacturer
- World's largest carpet recycler
- Significant In Stock product range available nationally
- Global supply chain to ensure continuity of supply
- Single source flooring provider - carpet tile, broadloom and resilient

## REDUCE IMPACT

- 100% of Shaw Contract's facilities are carbon neutral
- Shaw Contract is a signatory to the United Nations Global Compact, guiding sustainable sourcing, protecting human rights, environment & anti-corruption standards





**IN STOCK  
NEW ZEALAND**



# COLLECTION: COLOR FRAME | COLOR FORM

IN STOCK

STYLE: COLOR FRAME 5T081



**Quirky**  
81327



**Blaze**  
81668



**Enchanted**  
81370



**Day Dream**  
81415



**Aurora**  
81855

STYLE	COLOR FRAME
CODE	5T081
COLLECTION	COLOR FRAME   COLOR FORM
DIMENSIONS	60.9cm x 60.9cm (24" x 24")
PRODUCT TYPE	TILE
FIBRE PRODUCT	ECO SOLUTION Q® NYLON
BACKING	ECOWORX® TILE
DYE METHOD	100% SOLUTION DYED
TUFTED WEIGHT	610.3 g/m <sup>2</sup> (18 oz)
STITCHES	39.37/10cm
GAUGE	47.24/10cm
RECOMMENDED INSTALLATION	MONOLITHIC, QUARTER TURN, BRICK, ASHLAR, RANDOM



# COLLECTION: COMMUNITY

STYLE: FLAT WEAVE 5T321

IN STOCK

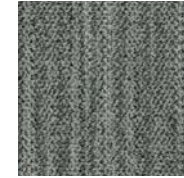


**Argan**  
01100

STYLE	FLAT WEAVE
CODE	5T321
COLLECTION	COMMUNITY
DIMENSIONS	22.86cm x 91.44cm (9" x 36")
PRODUCT TYPE	TILE
FIBRE PRODUCT	ECO SOLUTION Q® NYLON
BACKING	ECOWORX® TILE
DYE METHOD	100% SOLUTION DYED
TUFTED WEIGHT	678.1 G/M2 (20 OZ)
STITCHES	34/10CM
GAUGE	47.2/10CM
RECOMMENDED INSTALLATION	MONOLITHIC, HERRINGBONE, BRICK, ASHLAR, STAGGER



**Argan Earth**  
01101



**Silver**  
01535

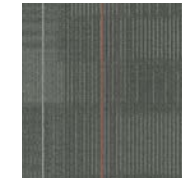
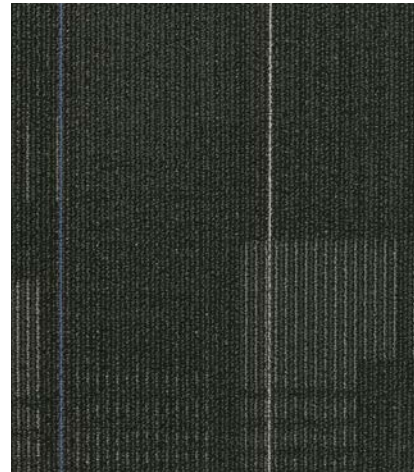


**Silver Oasis**  
01536

# COLLECTION: DIFFUSE STRATAWORX

STYLE: DIFFUSE 5T430

IN STOCK



**Train Station**  
75557

**Magnetic Fields**  
75505

STYLE	DIFFUSE
CODE	5T430
COLLECTION	DIFFUSE STRATAWORX
DIMENSIONS	60.9cm x 60.9cm (24" x 24")
PRODUCT TYPE	TILE
FIBRE PRODUCT	ECO SOLUTION Q® NYLON
BACKING	STRATAWORX®
DYE METHOD	100% SOLUTION DYED
TUFTED WEIGHT	542.49 g/m2 (16 oz)
STITCHES	35.4/10cm
GAUGE	47.2/10cm
RECOMMENDED INSTALLATION	MONOLITHIC, QUARTER TURN, BRICK, ASHLAR, RANDOM



# COLLECTION: DIFFUSE + DISPERSE

IN STOCK

STYLE: DISPERSE 59576



**Magnetic Fields**  
75505

STYLE	DISPERSE
CODE	59576
COLLECTION	DIFFUSE + DISPERSE
DIMENSIONS	60.9cm x 60.9cm (24" x 24")
PRODUCT TYPE	TILE
FIBRE PRODUCT	ECO SOLUTION Q® NYLON
BACKING	ECOWORX® TILE
DYE METHOD	100% SOLUTION DYED
TUFTED WEIGHT	542.49 g/m <sup>2</sup> (16 oz)
STITCHES	34/10cm
GAUGE	47.2/10cm
RECOMMENDED INSTALLATION	MONOLITHIC, QUARTER TURN, BRICK, ASHLAR, RANDOM



# COLLECTION: PACIFIC

STYLE: PETO INTRINSIC 42BRX

IN STOCK



**Tarmac**  
N577L

STYLE	PETO INTRINSIC
CODE	42BRX
COLLECTION	PACIFIC
DIMENSIONS	60.9cm x 60.9cm (24" x 24")
PRODUCT TYPE	TILE
FIBRE PRODUCT	ECO SOLUTION Q® NYLON
BACKING	ECOWORX® TILE
DYE METHOD	100% SOLUTION DYED
TUFTED WEIGHT	745.93 g/m2 (22 oz)
STITCHES	31.5/10cm
GAUGE	47.2/10cm
RECOMMENDED INSTALLATION	MONOLITHIC, QUARTER TURN, BRICK, ASHLAR, RANDOM

# COLLECTION: FLOOR ARCHITECTURE

STYLE: POURED 5T431

IN STOCK



**Mortar**  
06530



**River Rock**  
06481



**Granite**  
06500



**Aggregate**  
06501

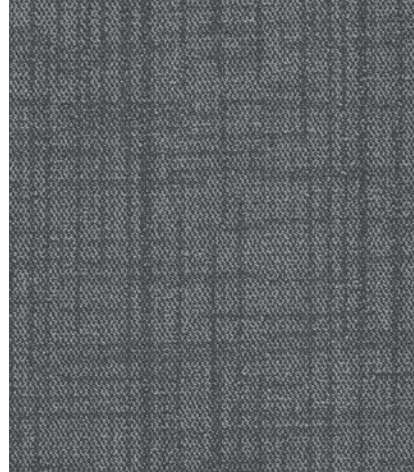
STYLE	POURED
CODE	5T431
COLLECTION	FLOOR ARCHITECTURE
DIMENSIONS	60.9cm x 60.9cm (24" x 24")
PRODUCT TYPE	TILE
FIBRE PRODUCT	ECO SOLUTION Q® NYLON
BACKING	STRATAWORX®
DYE METHOD	100% SOLUTION DYED
TUFTED WEIGHT	542.5 g/m2 (16 oz)
STITCHES	33/10cm
GAUGE	47.2/10cm
RECOMMENDED INSTALLATION	MONOLITHIC, QUARTER TURN, BRICK, ASHLAR, RANDOM



# COLLECTION: SPACE WORX

STYLE: SURROUND 5T432

IN STOCK



**Blue Herring**  
17481

STYLE	SURROUND
CODE	5T432
COLLECTION	SPACE WORX
DIMENSIONS	60.9cm x 60.9cm (24" x 24")
PRODUCT TYPE	TILE
FIBRE PRODUCT	ECO SOLUTION Q® NYLON
BACKING	STRATAWORX®
DYE METHOD	100% SOLUTION DYED
TUFTED WEIGHT	508.99 g/m2 (15 oz)
STITCHES	35.43/10cm
GAUGE	47.24/10cm
RECOMMENDED INSTALLATION	MONOLITHIC, QUARTER TURN, BRICK, ASHLAR, RANDOM



**Storm Cloud**  
17597



**Raven**  
17505



**Limestone**  
17530



# COLLECTION: PACIFIC

STYLE: KARAMEA 42G8X

IN STOCK



**Lava**  
S307H

STYLE	KARAMEA
CODE	42G8X
COLLECTION	PACIFIC
DIMENSIONS	60.9cm x 60.9cm (24" x 24")
PRODUCT TYPE	TILE
FIBRE PRODUCT	ECO SOLUTION Q® NYLON
BACKING	ECOWORX® TILE
DYE METHOD	100% SOLUTION DYED
TUFTED WEIGHT	542.51 g/m2 (16 oz)
STITCHES	34.13/10cm
GAUGE	47.24/10cm
RECOMMENDED INSTALLATION	MONOLITHIC, QUARTER TURN, BRICK, ASHLAR, RANDOM

# COLLECTION: PACIFIC

STYLE: WAIMEA 42G6W

IN STOCK



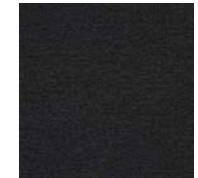
**Coal**  
X212T



**Bluestone**  
X649G



**Granite**  
T298N



**Volcanic**  
S903K

STYLE	WAIMEA
CODE	42G6W
COLLECTION	PACIFIC
DIMENSIONS	60.9cm x 60.9cm (24" x 24")
PRODUCT TYPE	TILE
FIBRE PRODUCT	ECO SOLUTION Q® NYLON
BACKING	ECOWORX® TILE
DYE METHOD	100% SOLUTION DYED
TUFTED WEIGHT	542.51 g/m2 (16 oz)
STITCHES	34.73/10cm
GAUGE	47.24/10cm
RECOMMENDED INSTALLATION	MONOLITHIC, QUARTER TURN, BRICK, ASHLAR, RANDOM



# COLLECTION: PACIFIC

STYLE: MURIWAI 42G6X

IN STOCK



**Lava**  
S904K

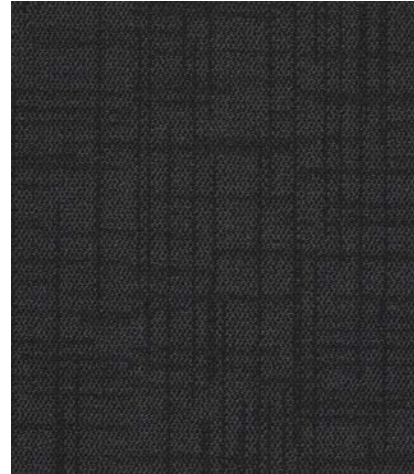
STYLE	MURIWAI
CODE	42G6X
COLLECTION	PACIFIC
DIMENSIONS	60.9cm x 60.9cm (24" x 24")
PRODUCT TYPE	TILE
FIBRE PRODUCT	ECO SOLUTION Q® NYLON
BACKING	ECOWORX® TILE
DYE METHOD	100% SOLUTION DYED
TUFTED WEIGHT	542.51 g/m2 (16 oz)
STITCHES	34.73/10cm
GAUGE	47.24/10cm
RECOMMENDED INSTALLATION	MONOLITHIC, QUARTER TURN, BRICK, ASHLAR, RANDOM



# COLLECTION: PACIFIC

STYLE: PIHA 42G6V

IN STOCK



**Silica**  
T297N

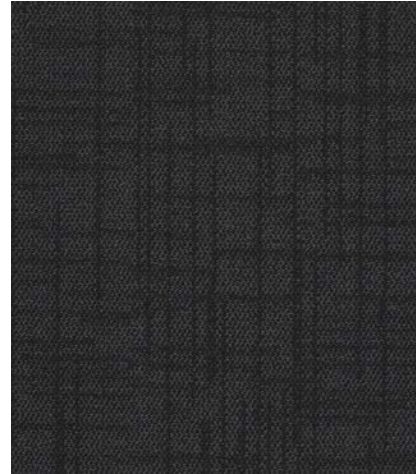
**Reef**  
S902K

STYLE	PIHA
CODE	42G6V
COLLECTION	PACIFIC
DIMENSIONS	60.9cm x 60.9cm (24" x 24")
PRODUCT TYPE	TILE
FIBRE PRODUCT	ECO SOLUTION Q® NYLON
BACKING	ECOWORX® TILE
DYE METHOD	100% SOLUTION DYED
TUFTED WEIGHT	542.51 g/m2 (16 oz)
STITCHES	34.73/10cm
GAUGE	47.24/10cm
RECOMMENDED INSTALLATION	MONOLITHIC, QUARTER TURN, BRICK, ASHLAR, RANDOM

# COLLECTION: PACIFIC

STYLE: PIHA ECOLOGIX

IN STOCK



**Reef**  
S902K

STYLE	PIHA
CODE	42G6V
COLLECTION	PACIFIC
DIMENSIONS	60.9cm x 60.9cm (24" x 24")
PRODUCT TYPE	TILE
FIBRE PRODUCT	ECO SOLUTION Q® NYLON
BACKING	ECOLOGIX® TILE
DYE METHOD	100% SOLUTION DYED
TUFTED WEIGHT	508.6 g/m2 (15 oz)
STITCHES	36.5/10cm
GAUGE	47.2/10cm
RECOMMENDED INSTALLATION	MONOLITHIC, QUARTER TURN, BRICK, ASHLAR, RANDOM



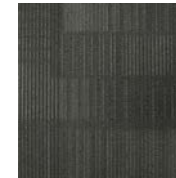
# COLLECTION: PACIFIC

STYLE: TAHARUU 42G8T

IN STOCK



**Bed Rock**  
R111V



**Clay**  
T404L

STYLE	TAHARUU
CODE	42G8T
COLLECTION	PACIFIC
DIMENSIONS	60.9cm x 60.9cm (24" x 24")
PRODUCT TYPE	TILE
FIBRE PRODUCT	ECO SOLUTION Q® NYLON
BACKING	ECOWORX® TILE
DYE METHOD	100% SOLUTION DYED
TUFTED WEIGHT	542.51 g/m2 (16 oz)
STITCHES	34.73/10cm
GAUGE	47.24/10cm
RECOMMENDED INSTALLATION	MONOLITHIC, QUARTER TURN, BRICK, ASHLAR, RANDOM

# COLLECTION: PACIFIC

STYLE: TAHARUU ECOLOGIX

IN STOCK



**Bed Rock**  
R111V

STYLE	TAHARUU
CODE	42G8T
COLLECTION	PACIFIC
DIMENSIONS	60.9cm x 60.9cm (24" x 24")
PRODUCT TYPE	TILE
FIBRE PRODUCT	ECO SOLUTION Q® NYLON
BACKING	ECOLOGIX® TILE
DYE METHOD	100% SOLUTION DYED
TUFTED WEIGHT	508.6 g/m2 (15 oz)
STITCHES	36.5/10cm
GAUGE	47.2/10cm
RECOMMENDED INSTALLATION	MONOLITHIC, QUARTER TURN, BRICK, ASHLAR, RANDOM

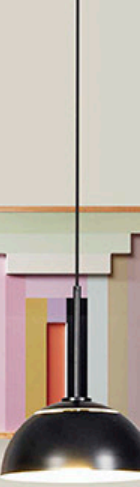




# QUICK SHIP PRODUCTS

5 - 6 WEEK LEAD TIME





# CARPET TILE





# COLLECTION: WEST ELM + SHAW CONTRACT

**QUICK SHIP**

STYLE: ZEAL 5T488



**Flair-Color**  
87675

STYLE	ZEAL
CODE	5T488
COLLECTION	WEST ELM + SHAW CONTRACT
DIMENSIONS	61cm x 61cm (24" x 24")
PRODUCT TYPE	TILE
FIBRE PRODUCT	ECO SOLUTION Q100™ NYLON
BACKING	ECOWORX® TILE
DYE METHOD	100% SOLUTION DYED
TUFTED WEIGHT	881.5 G/M2 (26 OZ)
STITCHES	28.5/10CM
GAUGE	39.4/10CM
RECOMMENDED INSTALLATION	MONOLITHIC, QUARTER TURN., BRICK, ASHLAR, RANDOM



**Flair**  
87100



**Flourish**  
87580



**Gusto**  
87500



**Moxie**  
87535



**Vibrance**  
87510



# COLLECTION: WEST ELM + SHAW CONTRACT

QUICK SHIP

STYLE: ZEST 5T487



**Flair-Color**  
87675



**Flair**  
87100



**Flourish**  
87580



**Gusto**  
87500



**Moxie**  
87535



**Vibrance**  
87510

STYLE	ZEST
CODE	5T487
COLLECTION	WEST ELM + SHAW CONTRACT
DIMENSIONS	61cm x 61cm (24" x 24")
PRODUCT TYPE	TILE
FIBRE PRODUCT	ECO SOLUTION Q100™ NYLON
BACKING	ECOWORX® TILE
DYE METHOD	100% SOLUTION DYED
TUFTED WEIGHT	881.5 G/M2 (26 OZ)
STITCHES	28.5/10CM
GAUGE	39.4/10CM
RECOMMENDED INSTALLATION	MONOLITHIC, QUARTER TURN., BRICK, ASHLAR, RANDOM



# COLLECTION: WEST ELM + SHAW CONTRACT

**QUICK SHIP**

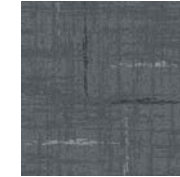
STYLE: SPARK 5T489



**Flair-Color**  
87675



**Flair**  
87100



**Flourish**  
87580



**Gusto**  
87500



**Moxie**  
87535



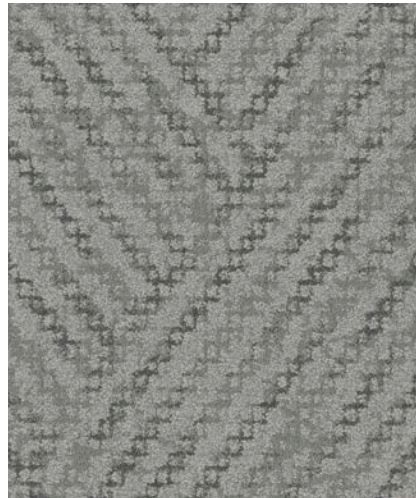
**Vibrance**  
87510

STYLE	SPARK
CODE	5T489
COLLECTION	WEST ELM + SHAW CONTRACT
DIMENSIONS	61cm x 61cm (24" x 24")
PRODUCT TYPE	TILE
FIBRE PRODUCT	ECO SOLUTION Q100™ NYLON
BACKING	ECOWORX® TILE
DYE METHOD	100% SOLUTION DYED
TUFTED WEIGHT	881.5 G/M2 (26 OZ)
STITCHES	28.5/10CM
GAUGE	39.4/10CM
RECOMMENDED INSTALLATION	MONOLITHIC, QUARTER TURN., BRICK, ASHLAR, RANDOM

# COLLECTION: WEST ELM + SHAW CONTRACT

QUICK SHIP

STYLE: CHISEL 5T485



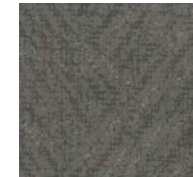
**Mineral**  
84535



**Granite**  
84105



**Graphite**  
84580



**Slate**  
84518



**Marble**  
84100

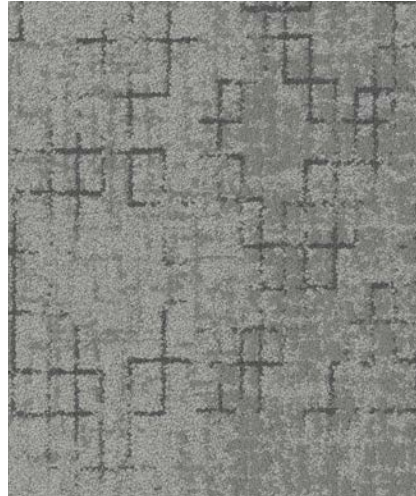
STYLE	CHISEL
CODE	5T485
COLLECTION	WEST ELM + SHAW CONTRACT
DIMENSIONS	61cm x 61cm (24" x 24")
PRODUCT TYPE	TILE
FIBRE PRODUCT	ECO SOLUTION Q100™ NYLON
BACKING	ECOWORX® TILE
DYE METHOD	100% SOLUTION DYED
TUFTED WEIGHT	915.5 G/M2 (27 OZ)
STITCHES	28.5/10CM
GAUGE	39.4/10CM
RECOMMENDED INSTALLATION	MONOLITHIC, QUARTER TURN., BRICK, ASHLAR, RANDOM



# COLLECTION: WEST ELM + SHAW CONTRACT

QUICK SHIP

STYLE: STONWORK 5T484



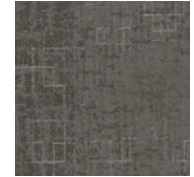
**Mineral**  
84535



**Granite**  
84105



**Graphite**  
84580



**Slate**  
84518



**Marble**  
84100

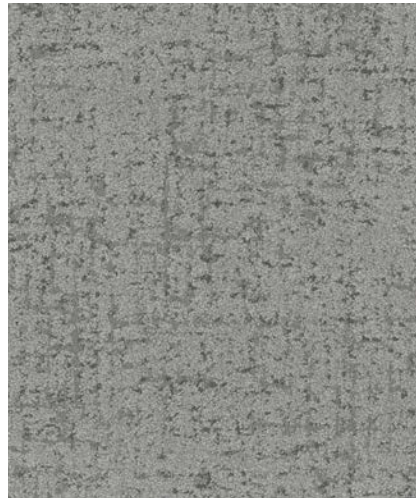
STYLE	STONWORK
CODE	5T484
COLLECTION	WEST ELM + SHAW CONTRACT
DIMENSIONS	61cm x 61cm (24" x 24")
PRODUCT TYPE	TILE
FIBRE PRODUCT	ECO SOLUTION Q100™ NYLON
BACKING	ECOWORX® TILE
DYE METHOD	100% SOLUTION DYED
TUFTED WEIGHT	915.5 G/M2 (27 OZ)
STITCHES	28.5/10CM
GAUGE	39.4/10CM
RECOMMENDED INSTALLATION	MONOLITHIC, QUARTER TURN., BRICK, ASHLAR, RANDOM



# COLLECTION: WEST ELM + SHAW CONTRACT

**QUICK SHIP**

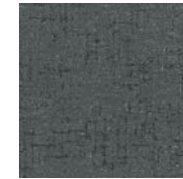
STYLE: GRIT 5T486



**Mineral**  
84535



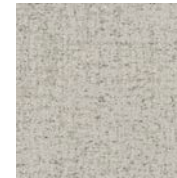
**Granite**  
84105



**Graphite**  
84580



**Slate**  
84518



**Marble**  
84100

STYLE	GRIT
CODE	5T486
COLLECTION	WEST ELM + SHAW CONTRACT
DIMENSIONS	61cm x 61cm (24" x 24")
PRODUCT TYPE	TILE
FIBRE PRODUCT	ECO SOLUTION Q100™ NYLON
BACKING	ECOWORX® TILE
DYE METHOD	100% SOLUTION DYED
TUFTED WEIGHT	915.5 G/M2 (27 OZ)
STITCHES	28.5/10CM
GAUGE	39.4/10CM
RECOMMENDED INSTALLATION	MONOLITHIC, QUARTER TURN., BRICK, ASHLAR, RANDOM



# COLLECTION: ACCENT

STYLE: ACCENT 5T475

QUICK SHIP



**Shell**  
57800

STYLE	ACCENT
CODE	5T475
COLLECTION	ACCENT
DIMENSIONS	61cm x 61cm (24" x 24")
PRODUCT TYPE	TILE
FIBRE PRODUCT	ECO SOLUTION Q™ NYLON
BACKING	ECOWORX® TILE
DYE METHOD	100% SOLUTION DYED
TUFTED WEIGHT	542.5 G/M2 (16 OZ)
STITCHES	33/10CM
GAUGE	47.2/10CM
RECOMMENDED INSTALLATION	MONOLITHIC, QUARTER TURN., BRICK, ASHLAR, RANDOM



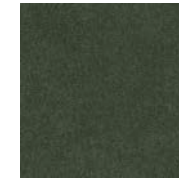
**Tiger's Eye**  
57679



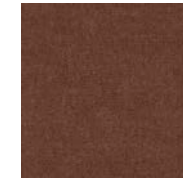
**Terracotta**  
57675



**Ruby**  
57866



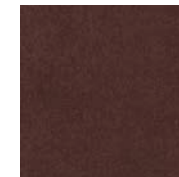
**Peridot**  
57316



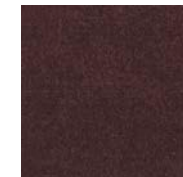
**Mesa**  
57713



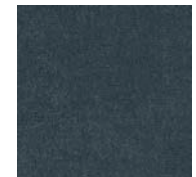
**Jasper**  
57497



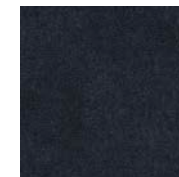
**Carnelian**  
57880



**Burgundy**  
06850



**Blue**  
57462



**Azure**  
57496



**Sea Glass**  
57396



# COLLECTION: COMMUNITY

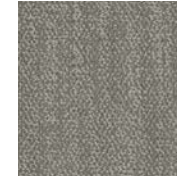
STYLE: HEDDLE 5T320

**QUICK SHIP**



**Argan**  
01100

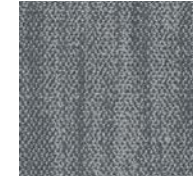
STYLE	HEDDLE
CODE	5T320
COLLECTION	COMMUNITY
DIMENSIONS	22.86cm x 91.44cm (9" x 36")
PRODUCT TYPE	TILE
FIBRE PRODUCT	ECO SOLUTION Q® NYLON
BACKING	ECOWORX® TILE
DYE METHOD	100% SOLUTION DYED
TUFTED WEIGHT	678.1 G/M2 (20 OZ)
STITCHES	34/10CM
GAUGE	47.2/10CM
RECOMMENDED INSTALLATION	MONOLITHIC, HERRINGBONE, BRICK, ASHLAR, STAGGER



**Wool**  
01105



**Crafted**  
01580



**Silver**  
01535



**Medina**  
01505



# COLLECTION: COMMUNITY

STYLE: FLAT WEAVE 5T321

QUICK SHIP



**Argan**  
01100

STYLE	FLAT WEAVE
CODE	5T321
COLLECTION	COMMUNITY
DIMENSIONS	22.86cm x 91.44cm (9" x 36")
PRODUCT TYPE	TILE
FIBRE PRODUCT	ECO SOLUTION Q® NYLON
BACKING	ECOWORX® TILE
DYE METHOD	100% SOLUTION DYED
TUFTED WEIGHT	678.1 G/M2 (20 OZ)
STITCHES	34/10CM
GAUGE	47.2/10CM
RECOMMENDED INSTALLATION	MONOLITHIC, HERRINGBONE, BRICK, ASHLAR, STAGGER



**Argan Earth**  
01101



**Wool**  
01105



**Wool Saffron**  
01106



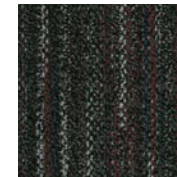
**Souk**  
01500



**Souk Mosaic**  
01501



**Medina**  
01505



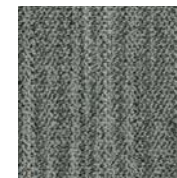
**Medina Tangerine**  
01506



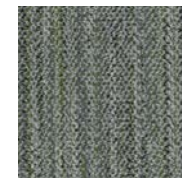
**Riad**  
01518



**Riad Marjorelle**  
01519



**Silver**  
01535



**Silver Oasis**  
01536



# COLLECTION: COMMUNITY

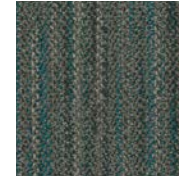
STYLE: FLAT WEAVE 5T321

**QUICK SHIP**



**Blended**  
01555

STYLE	FLAT WEAVE
CODE	5T321
COLLECTION	COMMUNITY
DIMENSIONS	22.86cm x 91.44cm (9" x 36")
PRODUCT TYPE	TILE
FIBRE PRODUCT	ECO SOLUTION Q® NYLON
BACKING	ECOWORX® TILE
DYE METHOD	100% SOLUTION DYED
TUFTED WEIGHT	678.1 G/M2 (20 OZ)
STITCHES	34/10CM
GAUGE	47.2/10CM
RECOMMENDED INSTALLATION	MONOLITHIC, HERRINGBONE, BRICK, ASHLAR, STAGGER



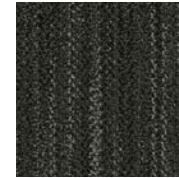
**Blended Sky**  
01556



**Crafted**  
01580



**Crafted Clay**  
01581



**Henna**  
01585



**Henna Glaze**  
01586



# COLLECTION: COMMUNITY

STYLE: BACK WEAVE 5T303

**QUICK SHIP**



**Wool**  
01105



**Crafted**  
01580



**Silver**  
01535



**Medina**  
01505

**Argan**  
01100

STYLE	BACK WEAVE
CODE	5T303
COLLECTION	COMMUNITY
DIMENSIONS	45.72cm x 91.44cm (18" x 36")
PRODUCT TYPE	TILE
FIBRE PRODUCT	ECO SOLUTION Q® NYLON
BACKING	ECOWORX® TILE
DYE METHOD	100% SOLUTION DYED
TUFTED WEIGHT	949.4 g/m2 (28 oz)
STITCHES	38/10CM
GAUGE	39.4/10cm
RECOMMENDED INSTALLATION	MONOLITHIC, HERRINGBONE, BRICK, ASHLAR, STAGGER, BASKETWEAVE, HALF BASKETWEAVE

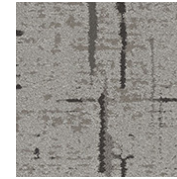
# COLLECTION: COMMUNITY

STYLE: EXCHANGE 5T304

**QUICK SHIP**



**Argan**  
01100



**Wool**  
01105



**Crafted**  
01580



**Silver**  
01535



**Medina**  
01505

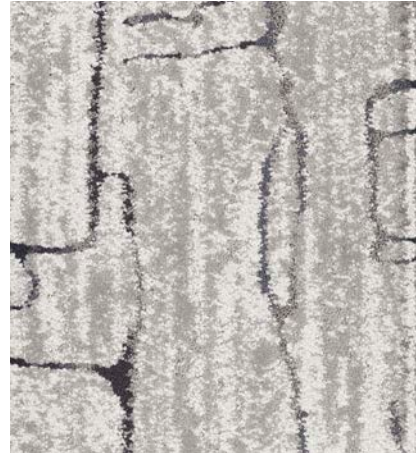
STYLE	EXCHANGE
CODE	5T304
COLLECTION	COMMUNITY
DIMENSIONS	45.72cm x 91.44cm (18" x 36")
PRODUCT TYPE	TILE
FIBRE PRODUCT	ECO SOLUTION Q® NYLON
BACKING	ECOWORX® TILE
DYE METHOD	100% SOLUTION DYED
TUFTED WEIGHT	949.4 g/m2 (28 oz)
STITCHES	38/10CM
GAUGE	39.4/10cm
RECOMMENDED INSTALLATION	MONOLITHIC, HERRINGBONE, BRICK, ASHLAR, STAGGER, BASKETWEAVE, HALF BASKETWEAVE



# COLLECTION: COMMUNITY

STYLE: PROCESS 5T302

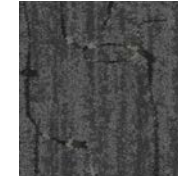
QUICK SHIP



**Argan**  
01100



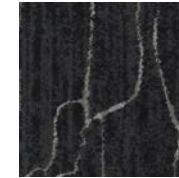
**Wool**  
01105



**Crafted**  
01580



**Silver**  
01535



**Medina**  
01505

STYLE	PROCESS
CODE	5T302
COLLECTION	COMMUNITY
DIMENSIONS	45.72cm x 91.44cm (18" x 36")
PRODUCT TYPE	TILE
FIBRE PRODUCT	ECO SOLUTION Q® NYLON
BACKING	ECOWORX® TILE
DYE METHOD	100% SOLUTION DYED
TUFTED WEIGHT	949.4 g/m2 (28 oz)
STITCHES	38/10CM
GAUGE	39.4/10cm
RECOMMENDED INSTALLATION	MONOLITHIC, HERRINGBONE, BRICK, ASHLAR, STAGGER, BASKETWEAVE, HALF BASKETWEAVE

# COLLECTION: COMMUNITY

STYLE: KNOTTED 5T301

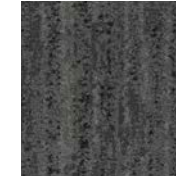
**QUICK SHIP**



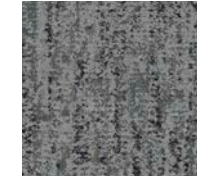
**Argan**  
01100



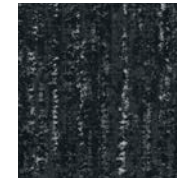
**Wool**  
01105



**Crafted**  
01580



**Silver**  
01535



**Medina**  
01505

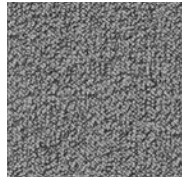
STYLE	KNOTTED
CODE	5T301
COLLECTION	COMMUNITY
DIMENSIONS	45.72cm x 91.44cm (18" x 36")
PRODUCT TYPE	TILE
FIBRE PRODUCT	ECO SOLUTION Q® NYLON
BACKING	ECOWORX® TILE
DYE METHOD	100% SOLUTION DYED
TUFTED WEIGHT	949.4 g/m2 (28 oz)
STITCHES	38/10CM
GAUGE	39.4/10cm
RECOMMENDED INSTALLATION	MONOLITHIC, HERRINGBONE, BRICK, ASHLAR, STAGGER, BASKETWEAVE, HALF BASKETWEAVE



# COLLECTION: HAVEN

STYLE: NEST 5T238

QUICK SHIP



**Rainstorm**  
35535

**Greige**  
35516

STYLE	NEST
CODE	5T238
COLLECTION	HAVEN
DIMENSIONS	22.86cm x 91.44cm (9" x 36")
PRODUCT TYPE	TILE
FIBRE PRODUCT	ECO SOLUTION Q® NYLON
BACKING	ECOWORX® TILE
DYE METHOD	100% SOLUTION DYED
TUFTED WEIGHT	813.8 g/m2 (24 oz)
STITCHES	38.5/10cm
GAUGE	47.2/10cm
RECOMMENDED INSTALLATION	MONOLITHIC, HERRINGBONE, BRICK, ASHLAR, STAGGER



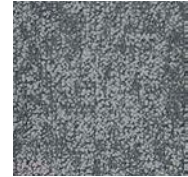
# COLLECTION: HAVEN

STYLE: SHELTER 5T240

**QUICK SHIP**



**Greige**  
38516



**Rainstorm**  
38535



**Apricot**  
38675



**Ivy**  
38375



**Mint**  
38327



**Overdye**  
38496



**Rosewood**  
38870

STYLE	SHELTER
CODE	5T240
COLLECTION	HAVEN
DIMENSIONS	22.86cm x 91.44cm (9" x 36")
PRODUCT TYPE	TILE
FIBRE PRODUCT	ECO SOLUTION Q® NYLON
BACKING	ECOWORX® TILE
DYE METHOD	100% SOLUTION DYED
TUFTED WEIGHT	746 g/m2 (22 oz)
STITCHES	32/10cm
GAUGE	47.2/10cm
RECOMMENDED INSTALLATION	MONOLITHIC, HERRINGBONE, BRICK, ASHLAR, STAGGER



# COLLECTION: HAVEN

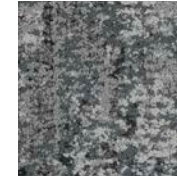
STYLE: FAMILIAR 5T235

QUICK SHIP

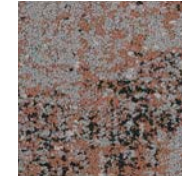


**Greige**  
35516

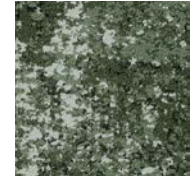
STYLE	FAMILIAR
CODE	5T235
COLLECTION	HAVEN
DIMENSIONS	22.86cm x 91.44cm (9" x 36")
PRODUCT TYPE	TILE
FIBRE PRODUCT	ECO SOLUTION Q® NYLON
BACKING	ECOWORX® TILE
DYE METHOD	100% SOLUTION DYED
TUFTED WEIGHT	949.4 g/m2 (28 oz)
STITCHES	34/10cm
GAUGE	39.4/10cm
RECOMMENDED INSTALLATION	MONOLITHIC, HERRINGBONE, BRICK, ASHLAR, STAGGER



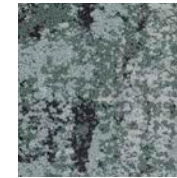
**Rainstorm**  
35535



**Apricot**  
35675



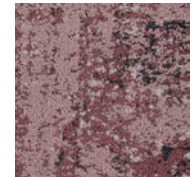
**Ivy**  
35375



**Mint**  
35327



**Overdye**  
35496



**Rosewood**  
35870



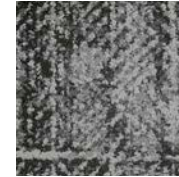
# COLLECTION: HAVEN

STYLE: HONEST 5T236

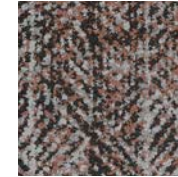
**QUICK SHIP**



**Greige**  
35516



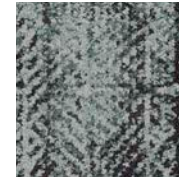
**Rainstorm**  
35535



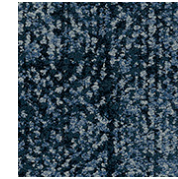
**Apricot**  
35675



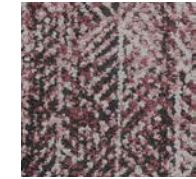
**Ivy**  
35375



**Mint**  
35327



**Overdye**  
35496



**Rosewood**  
35870

STYLE	HONEST
CODE	5T236
COLLECTION	HAVEN
DIMENSIONS	22.86cm x 91.44cm (9" x 36")
PRODUCT TYPE	TILE
FIBRE PRODUCT	ECO SOLUTION Q® NYLON
BACKING	ECOWORX® TILE
DYE METHOD	100% SOLUTION DYED
TUFTED WEIGHT	881.6 g/m2 (22 oz)
STITCHES	32.5/10cm
GAUGE	39.4/10cm
RECOMMENDED INSTALLATION	MONOLITHIC, HERRINGBONE, BRICK, ASHLAR, STAGGER



# COLLECTION: HAVEN

STYLE: IDENTITY 5T237

QUICK SHIP



**Greige**  
35516



**Rainstorm**  
35535

STYLE	IDENTITY
CODE	5T237
COLLECTION	HAVEN
DIMENSIONS	22.86cm x 91.44cm (9" x 36")
PRODUCT TYPE	TILE
FIBRE PRODUCT	ECO SOLUTION Q® NYLON
BACKING	ECOWORX® TILE
DYE METHOD	100% SOLUTION DYED
TUFTED WEIGHT	881.6 g/m2 (22 oz)
STITCHES	32.5/10cm
GAUGE	39.4/10cm
RECOMMENDED INSTALLATION	MONOLITHIC, HERRINGBONE, BRICK, ASHLAR, STAGGER

# COLLECTION: DYE LAB

STYLE: DYE LAB 5T041

QUICK SHIP

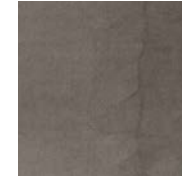


**Indigo**  
41496

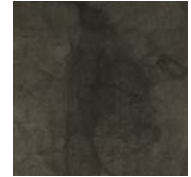
STYLE	DYE LAB
CODE	5T041
COLLECTION	DYE LAB
DIMENSIONS	60.9cm x 60.9cm (24" x 24")
PRODUCT TYPE	TILE
FIBRE PRODUCT	ECO SOLUTION Q® NYLON
BACKING	ECOWORX® TILE
DYE METHOD	100% PIECE DYED
TUFTED WEIGHT	1220.61 g/m2 (36 oz)
STITCHES	43.31/10cm
GAUGE	39.37/10cm
RECOMMENDED INSTALLATION	MONOLITHIC, QUARTER TURN, BRICK, ASHLAR, RANDOM



**Cornflower**  
41480



**Henna**  
41535



**Sumac**  
41504



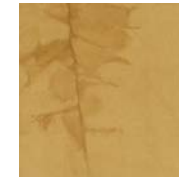
**Woad**  
41497



**Fustic Wood**  
41316



**Fustic Saxon**  
41396



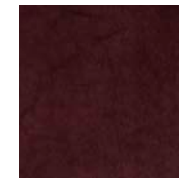
**Osage Orange**  
41202



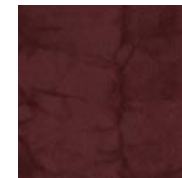
**Sandalwood**  
41665



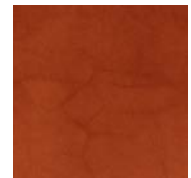
**Beet**  
41890



**Lac**  
41762



**Brazil Wood**  
41855



**Madder Root**  
41864



# COLLECTION: DYE LAB

STYLE: DYE LAB 5T041

QUICK SHIP

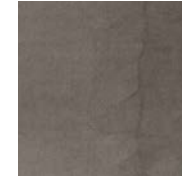


**Henna**  
41535

STYLE	DYE LAB
CODE	5T041
COLLECTION	DYE LAB
DIMENSIONS	60.9cm x 60.9cm (24" x 24")
PRODUCT TYPE	TILE
FIBRE PRODUCT	ECO SOLUTION Q® NYLON
BACKING	ECOWORX® TILE
DYE METHOD	100% PIECE DYED
TUFTED WEIGHT	1220.61 g/m2 (36 oz)
STITCHES	43.31/10cm
GAUGE	39.37/10cm
RECOMMENDED INSTALLATION	MONOLITHIC, QUARTER TURN, BRICK, ASHLAR, RANDOM



**Cornflower**  
41480



**Henna**  
41535



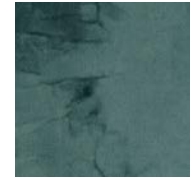
**Iris**  
41965



**Black Tea**  
41516



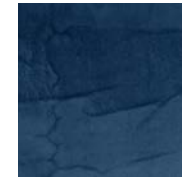
**Iron**  
41580



**Knotweed**  
41491



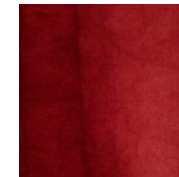
**Black Walnut**  
41402



**Saxon**  
41462



**Logwood**  
41505

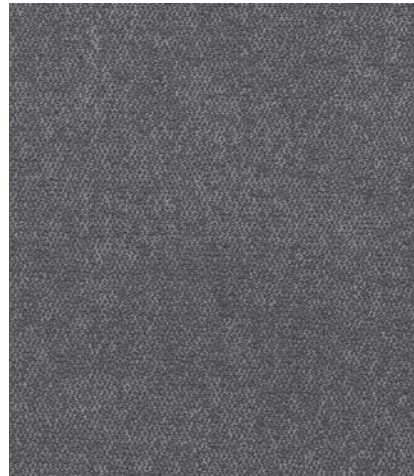


**Cochineal**  
41880

# COLLECTION: FLOOR ARCHITECTURE

STYLE: POURED 5T206

QUICK SHIP

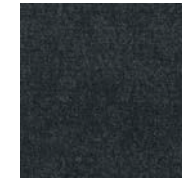


**Mortar**  
06530

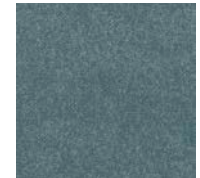
STYLE	POURED
CODE	5T206
COLLECTION	FLOOR ARCHITECTURE
DIMENSIONS	60.9cm x 60.9cm (24" x 24")
PRODUCT TYPE	TILE
FIBRE PRODUCT	ECO SOLUTION Q® NYLON
BACKING	ECOWORX® TILE
DYE METHOD	100% SOLUTION DYED
TUFTED WEIGHT	542.5 g/m2 (16 oz)
STITCHES	33/10cm
GAUGE	47.2/10cm
RECOMMENDED INSTALLATION	MONOLITHIC, QUARTER TURN, BRICK, ASHLAR, RANDOM



**River Rock**  
06481



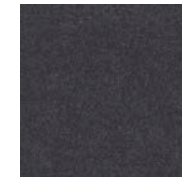
**Granite**  
06500



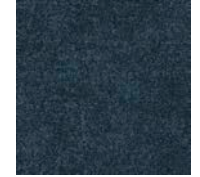
**Aquamarine**  
06327



**Mineral**  
06595



**Shale**  
06557



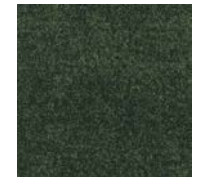
**Lapis**  
06486



**Concrete**  
06761



**Aggregate**  
06501



**Emerald**  
06335



**Mix**  
06597



**Gypsum**  
06515



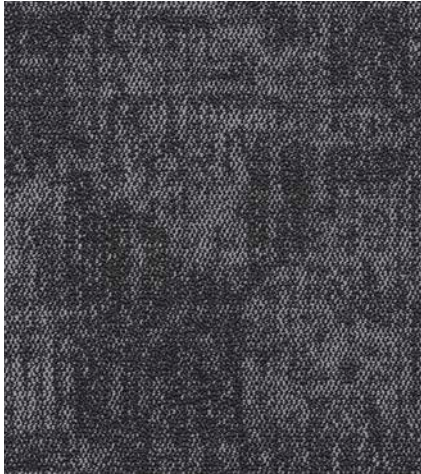
**Limestone**  
06535



# COLLECTION: FLOOR ARCHITECTURE

STYLE: LANDFORM 5T449

**QUICK SHIP**



**Aggregate**  
06501

STYLE	LANDFORM
CODE	5T449
COLLECTION	FLOOR ARCHITECTURE
DIMENSIONS	61 cm x 61 cm
PRODUCT TYPE	TILE
FIBRE PRODUCT	ECO SOLUTION Q® NYLON
BACKING	ECOWORX® TILE
DYE METHOD	100% SOLUTION DYED
TUFTED WEIGHT	542.5 g/m <sup>2</sup>
STITCHES	31.5 per 10 cm
GAUGE	47.2 per 10 cm
RECOMMENDED INSTALLATION	MONOLITHIC, QUARTER TURN, BRICK, ASHLAR, RANDOM



**Beryl**  
06485



**Clay**  
06100



**Granite**  
06500



**Marble**  
06101



**Mineral**  
06595



**Mortar**  
06530



**River Rock**  
06481



**Sediment**  
06555



**Silt**  
06518



# COLLECTION: FLOOR ARCHITECTURE

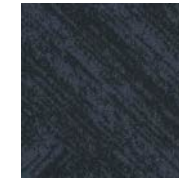
STYLE: BISECT 5T448

QUICK SHIP



**Aggregate**  
06501

STYLE	BISECT
CODE	5T448
COLLECTION	FLOOR ARCHITECTURE
DIMENSIONS	61 cm x 61 cm
PRODUCT TYPE	TILE
FIBRE PRODUCT	ECO SOLUTION Q® NYLON
BACKING	ECOWORX® TILE
DYE METHOD	100% SOLUTION DYED
TUFTED WEIGHT	542.5 g/m <sup>2</sup>
STITCHES	31.5 per 10 cm
GAUGE	47.2 per 10 cm
RECOMMENDED INSTALLATION	MONOLITHIC, QUARTER TURN, BRICK, ASHLAR, RANDOM



**Beryl**  
06485



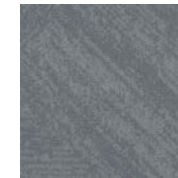
**Clay**  
06100



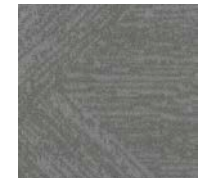
**Granite**  
06500



**Marble**  
06101



**Mineral**  
06595



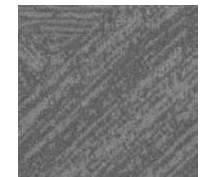
**Mortar**  
06530



**River Rock**  
06481



**Sediment**  
06555



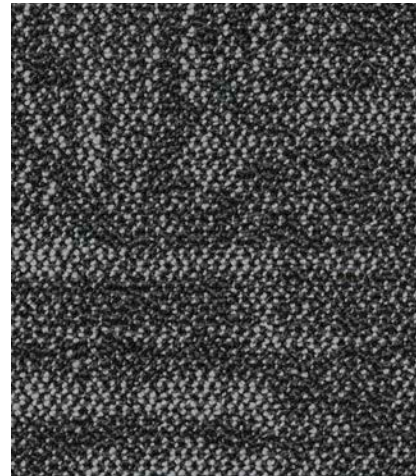
**Silt**  
06518



# COLLECTION: FLOOR ARCHITECTURE

STYLE: STEPPE 5T447

**QUICK SHIP**



**Aggregate**  
06501

STYLE	STEPPE
CODE	5T447
COLLECTION	FLOOR ARCHITECTURE
DIMENSIONS	23 cm x 91 cm
PRODUCT TYPE	TILE
FIBRE PRODUCT	ECO SOLUTION Q® NYLON
BACKING	ECOWORX® TILE
DYE METHOD	100% SOLUTION DYED
TUFTED WEIGHT	542.5 g/m <sup>2</sup>
STITCHES	31.5 per 10 cm
GAUGE	47.2 per 10 cm
RECOMMENDED INSTALLATION	MONOLITHIC, BRICK, ASHLAR, HERRINGBONE, STAGGER



**Beryl**  
06485



**Clay**  
06100



**Granite**  
06500



**Marble**  
06101



**Mineral**  
06595



**Mortar**  
06530



**River Rock**  
06481



**Sediment**  
06555



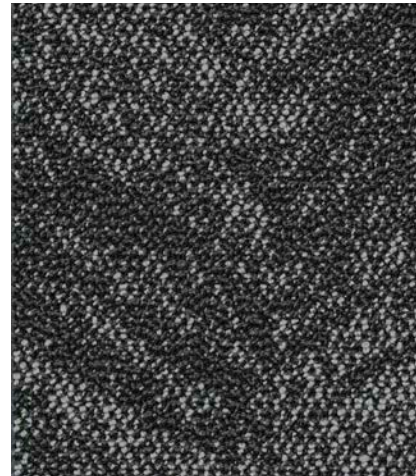
**Silt**  
06518



# COLLECTION: FLOOR ARCHITECTURE

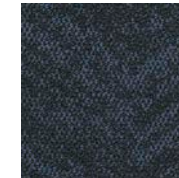
STYLE: RIDGE 5T446

QUICK SHIP



**Aggregate**  
06501

STYLE	RIDGE
CODE	5T446
COLLECTION	FLOOR ARCHITECTURE
DIMENSIONS	23 cm x 91 cm
PRODUCT TYPE	TILE
FIBRE PRODUCT	ECO SOLUTION Q® NYLON
BACKING	ECOWORX® TILE
DYE METHOD	100% SOLUTION DYED
TUFTED WEIGHT	542.5 g/m <sup>2</sup>
STITCHES	31.5 per 10 cm
GAUGE	47.2 per 10 cm
RECOMMENDED INSTALLATION	MONOLITHIC, BRICK, ASHLAR, HERRINGBONE, STAGGER



**Beryl**  
06485



**Clay**  
06100



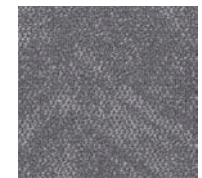
**Granite**  
06500



**Marble**  
06101



**Mineral**  
06595



**Mortar**  
06530



**River Rock**  
06481



**Sediment**  
06555



**Silt**  
06518



# COLLECTION: KINDRED

STYLE: BELONG 5T261

QUICK SHIP



Solace  
48485

STYLE	BELONG
CODE	5T261
COLLECTION	KINDRED
DIMENSIONS	60.9cm x 60.9cm (24" x 24")
PRODUCT TYPE	TILE
FIBRE PRODUCT	ECO SOLUTION Q® NYLON
BACKING	ECOWORX® TILE
DYE METHOD	100% SOLUTION DYED
TUFTED WEIGHT	610.3 g/m <sup>2</sup> (18 oz)
STITCHES	35.0/10 cm
GAUGE	39.4/10cm
RECOMMENDED INSTALLATION	MONOLITHIC, QUARTER TURN, BRICK, ASHLAR, RANDOM

# COLLECTION: COLOR FRAME | COLOR FORM

**QUICK SHIP**

STYLE: COLOR FRAME 5T081



**Glowing**  
81211

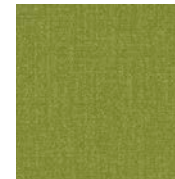
STYLE	COLOR FRAME
CODE	5T081
COLLECTION	COLOR FRAME   COLOR FORM
DIMENSIONS	60.9cm x 60.9cm (24" x 24")
PRODUCT TYPE	TILE
FIBRE PRODUCT	ECO SOLUTION Q® NYLON
BACKING	ECOWORX® TILE
DYE METHOD	100% SOLUTION DYED
TUFTED WEIGHT	610.3 g/m <sup>2</sup> (18 oz)
STITCHES	39.37/10cm
GAUGE	47.24/10cm
RECOMMENDED INSTALLATION	MONOLITHIC, QUARTER TURN, BRICK, ASHLAR, RANDOM



**Frolic**  
81284



**Tricky**  
81323



**Hyper Green**  
81326



**Puzzle**  
81991



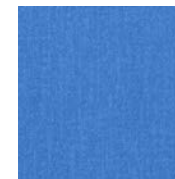
**Imagine**  
81375



**Charming**  
81429



**Inspire**  
81405



**Hyper Blue**  
81436



# COLLECTION: COLOR FRAME | COLOR FORM

QUICK SHIP

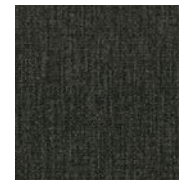
STYLE: COLOR FRAME 5T081



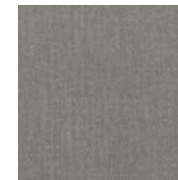
**Magic**  
81505



**Duplicity**  
81506



**Mask**  
81507



**Mystic Grey**  
81515



**Imply**  
81485



**Disappear**  
81557



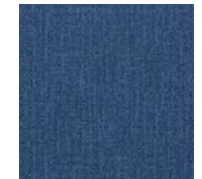
**Clouded**  
81595



**Mojo**  
81675



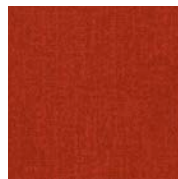
**Utopia**  
81755



**Figment**  
81486



**Stunt**  
81856



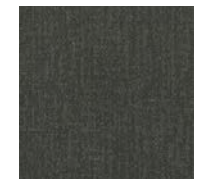
**Ember**  
81870



**Mystery**  
81516



**Crystal**  
81535



**Coax**  
81549



**Observe**  
81760

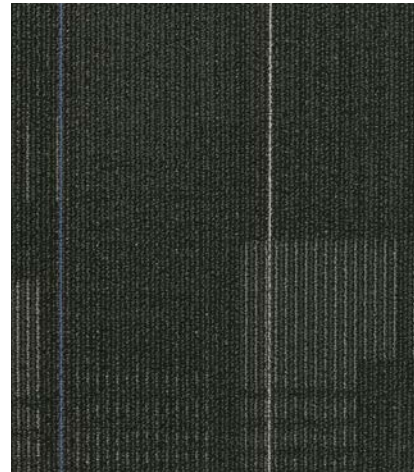


**Appearance**  
81761

# COLLECTION: DIFFUSE + DISPERSE

QUICK SHIP

STYLE: DIFFUSE 59575



**Magnetic Fields**  
75505

STYLE	DIFFUSE
CODE	59575
COLLECTION	DIFFUSE + DISPERSE
DIMENSIONS	60.9cm x 60.9cm (24" x 24")
PRODUCT TYPE	TILE
FIBRE PRODUCT	ECO SOLUTION Q® NYLON
BACKING	ECOWORX® TILE
DYE METHOD	100% SOLUTION DYED
TUFTED WEIGHT	542.49 g/m2 (16 oz)
STITCHES	35.4/10cm
GAUGE	47.2/10cm
RECOMMENDED INSTALLATION	MONOLITHIC, QUARTER TURN, BRICK, ASHLAR, RANDOM



# COLLECTION: STEPPIN OUT

STYLE: WELCOME II 5T031 (ENTRANCE MAT)

QUICK SHIP



**Charcoal**  
31549

STYLE	WELCOME II
CODE	5T031
COLLECTION	STEPPIN OUT
DIMENSIONS	60.9cm x 60.9cm (24" x 24")
PRODUCT TYPE	TILE
FIBRE PRODUCT	PET POLYESTER
BACKING	ECOWORX® TILE
DYE METHOD	100% SOLUTION DYED
TUFTED WEIGHT	1661.4 g/m2 (49 oz)
STITCHES	36/10cm
GAUGE	47.2/10cm
RECOMMENDED INSTALLATION	QUARTER TURN



**RESILIENT**



# COLLECTION: NORDIC LVT

STYLE: NORDIC 4377V

**QUICK SHIP**



**Aspen**  
77100



**Natural**  
77101



**Honey**  
77103



**Alder**  
77104



**Calm**  
77111



**Blonde**  
77112



**Driftwood**  
77120

STYLE	NORDIC
CODE	4377V
COLLECTION	NORDIC
DIMENSIONS	18 cm x 122 cm
CONSTRUCTION	Heavy Commercial Luxury Vinyl Tile With Fiberglass
OVERALL THICKNESS	5 mm (0.197")
WEAR LAYER THICKNESS	22 mil (0.022 in)
INSTALLATION	Direct Glue Or Perimeter Glue
FINISH	ExoGuard+™

# COLLECTION: NORDIC LVT

STYLE: NORDIC 4377V

**QUICK SHIP**



**Golden**  
77756



**Birch**  
77140



**Fir**  
77155



**Radiant**  
77710



**Redwood**  
77720



**Elm**  
77721



**Balance**  
77755

STYLE	NORDIC
CODE	4377V
COLLECTION	NORDIC
DIMENSIONS	18 cm x 122 cm
CONSTRUCTION	Heavy Commercial Luxury Vinyl Tile With Fiberglass
OVERALL THICKNESS	5 mm (0.197")
WEAR LAYER THICKNESS	22 mil (0.022 in)
INSTALLATION	Direct Glue Or Perimeter Glue
FINISH	ExoGuard+™



# COLLECTION: ABIDE LVT

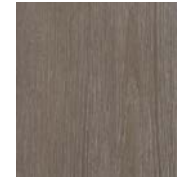
STYLE: ABIDE 4107V

**QUICK SHIP**

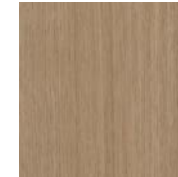


**Conch Shell Oak**  
07140

STYLE	ABIDE
CODE	4107V
COLLECTION	ABIDE & INHABIT
DIMENSIONS	18 cm x 122 cm
CONSTRUCTION	COMMERCIAL LUXURY VINYL TILE
CLASS/ASTM 1700	CLASS III, TYPE B
OVERALL THICKNESS	2.5 mm
FINISH	ExoGuard+™
INSTALLATION	GLUE DOWN



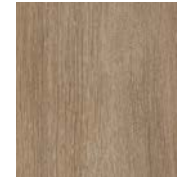
**Heirloom Oak**  
07150



**Maize Wenge**  
07210



**Wheat Oak**  
07220



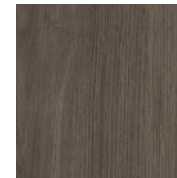
**Tahini Oak**  
07240



**Caramel Wenge**  
07250



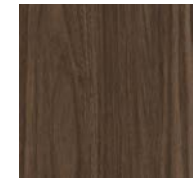
**Spiced Oak**  
07630



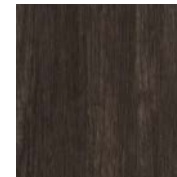
**Anise Oak**  
07570



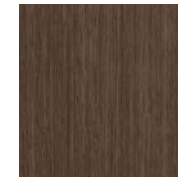
**Cadmium Oak**  
07515



**Allspice Walnut**  
07710



**Raw Umber Oak**  
07780



**Gabon Wenge**  
07730

# COLLECTION: ABIDE LVT

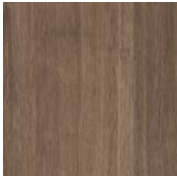
STYLE: ABIDE 4107V

**QUICK SHIP**



**Brushed Suede Oak**  
07700

STYLE	ABIDE
CODE	4107V
COLLECTION	ABIDE & INHABIT
DIMENSIONS	18 cm x 122 cm
CONSTRUCTION	COMMERCIAL LUXURY VINYL TILE
CLASS/ASTM 1700	CLASS III, TYPE B
OVERALL THICKNESS	2.5 mm
FINISH	ExoGuard+™
INSTALLATION	GLUE DOWN



**Palomino Oak**  
07660



**Coriander Oak**  
07720



**Chocolate Walnut**  
07760



# COLLECTION: CONCRETE + COMPOSED

STYLE: CONCRETE 094UV

QUICK SHIP



**Forged Concrete**  
03507



**Misty Quartz**  
03501



**Tempered Concrete**  
03502

STYLE	CONCRETE
CODE	094UV
COLLECTION	CONCRETE + COMPOSED
DIMENSIONS	46.99 cm x 61.01 cm (18.5" x 24.02")
CONSTRUCTION	COREtec with XRC
ATTACHED UNDERLAYMENT	CORK
OVERALL THICKNESS	5,5 mm (0.216")
FINISH	ExoGuard™
WEAR LAYER THICKNESS	20 mil or 0.020 (0.5 mm)
INSTALLATION	FLOATING OR GLUE DOWN

# COLLECTION: CONCRETE + COMPOSED

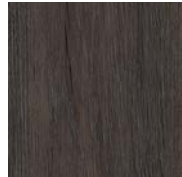
**QUICK SHIP**

STYLE: COMPOSED 098UV



**Stony Oak**  
0051A6

STYLE	COMPOSED
CODE	098UV
COLLECTION	CONCRETE + COMPOSED
DIMENSIONS	18.11 cm x 122.00 cm (7.13" x 48.03")
CONSTRUCTION	COREtec with XRC
ATTACHED UNDERLAYMENT	CORK
OVERALL THICKNESS	5.5 mm (0.216")
WEAR LAYER THICKNESS	20 mil or 0.020 (0.5 mm)
INSTALLATION	FLOATING OR GLUE DOWN



**Bison**  
00751



**Cascade**  
00120



**Spice**  
00720



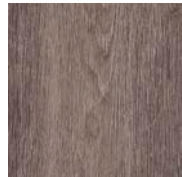
**Chalet**  
00755



**Grand Teton**  
00506



**Orchard**  
00103



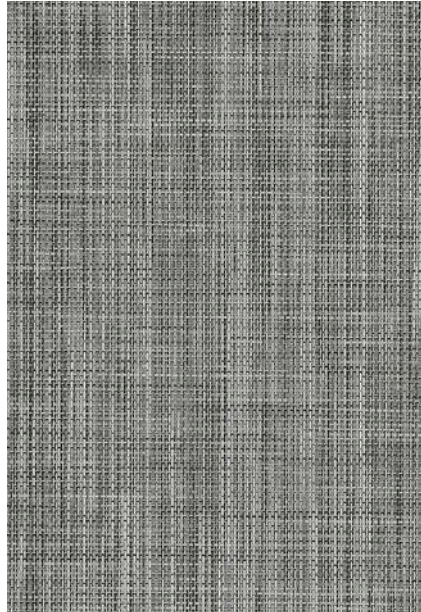
**Landscape**  
00760



# COLLECTION: RETHINK LVT

STYLE: RETHINK 0733V

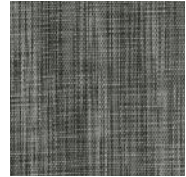
**QUICK SHIP**



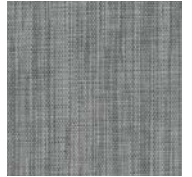
**Hybrid**  
33100



**Minimal**  
33155



**Carbon**  
33505



**Metal**  
33530



**Core**  
33515

STYLE	RETHINK
CODE	0733V
COLLECTION	RETHINK
DIMENSIONS	22.86 cm x 91.44 cm
CONSTRUCTION	WOVEN LUXURY VINYL TILE
CLASS/ASTM 1700	CLASS III SURFACE DECORATED VINYL TILE
OVERALL THICKNESS	3.0 mm
FINISH	ExoGuard™ Quartz Enhanced Urethane
INSTALLATION	GLUE DOWN

# COLLECTION: SOLITUDE LVT

STYLE: SOLITUDE 0648V

**QUICK SHIP**



**Cocoa**  
0648V 48103

STYLE	SOLITUDE
CODE	0648V
COLLECTION	SOLITUDE
DIMENSIONS	15.24 cm x 121.92 cm
CONSTRUCTION	LUXURY VINYL TILE WITH FIBREGLASS
CLASS/ASTM 1700	CLASS III, TYPE B
OVERALL THICKNESS	5.0 mm
FINISH	ExoGuard™
WEAR LAYER THICKNESS	20 mil or 0.020 (0.5 mm)
INSTALLATION	GLUE DOWN



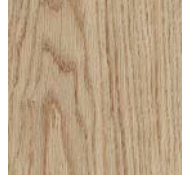
**Smoke**  
0648V 48506



**Umber**  
0648V 48761



**Char**  
0648V 48549



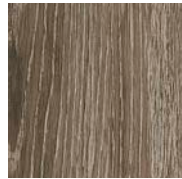
**Natural**  
0648V 48250



**Cottonwood**  
0648V 48120



**Woodland**  
0648V 48760



**Urban Ash**  
0648V 48540



# COLLECTION: COMPOUND + CAST LVT

**QUICK SHIP**

STYLE: COMPOUND 4074V



**Threshold**  
77515



**Elevate**  
77518



**Chisel**  
77520



**Base**  
77504

**Origin**  
77114

STYLE	COMPOUND
CODE	4074V
COLLECTION	COMPOUND + CAST
DIMENSIONS	61 cm x 61 cm
CONSTRUCTION	HEAVY COMMERCIAL LUXURY VINYL TILE
CLASS/ASTM 1700	CLASS III, TYPE B
OVERALL THICKNESS	2.5 mm
FINISH	ExoGuard+™
WEAR LAYER THICKNESS	20 mil or 0.020 (0.51 mm)
INSTALLATION	GLUE DOWN

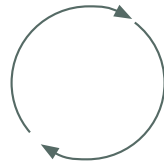
# CRADLE TO CRADLE® DESIGN

SHAW CONTRACT ECOWORX CARPET TILES UTILISE THE CRADLE TO CRADLE DESIGN PHILOSOPHY TO MAXIMISE MATERIAL VALUE WHILE ELIMINATING WASTE



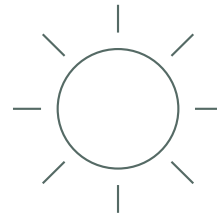
## Material Health

The framework and assessment process to ensure that a product is made from ingredients that are safe and healthy to humans and the environment



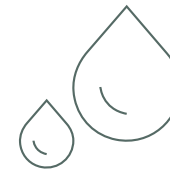
## Material Reutilisation (Product Circularity)

The component that requires a product to use recycled content and be designed to be recycled



## Renewable Energy & Carbon Management

The expectation to use sources of clean, renewable energy to manufacture products and to reduce energy use overall



## Water Stewardship

The principle that water is a precious global resource that must be protected



## Social Fairness

The pillar that ensures business operations are designed to honour and respect all people and nature



# INNOVATIVE PRODUCTS

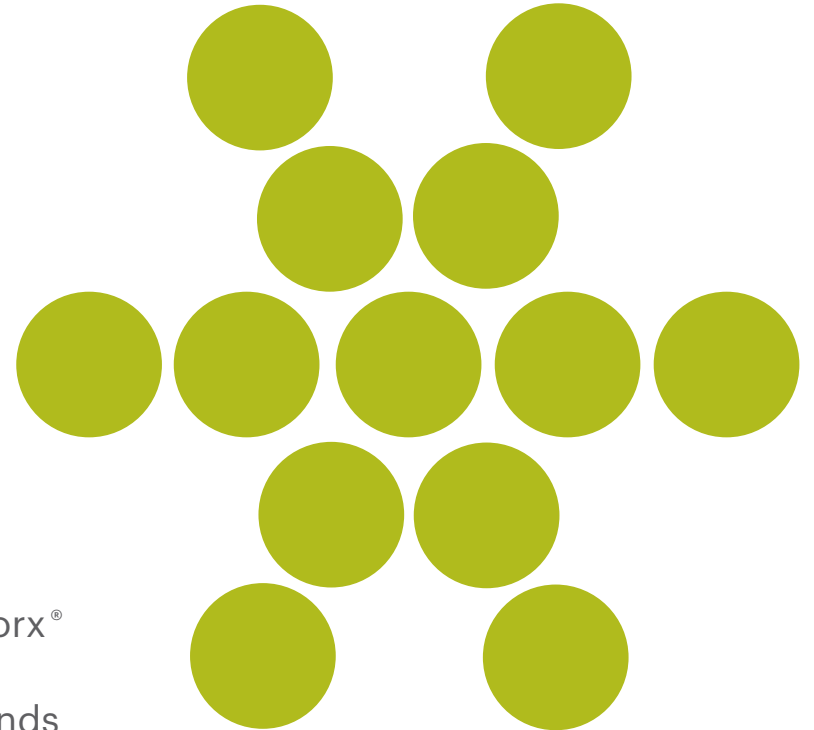
## LokDots™



LokDots vs. Glue



**97%** weight difference



## DRY ADHESIVE DOTS APPLIED TO ECOWORX® TILE BACKING WITH HANDHELD APPLICATOR

LokDots is a pressure sensitive adhesive for the installation of EcoWorx® carpet tile. This odourless system provides an alternative to wet adhesive, virtually eliminating the issue of Volatile Organic Compounds (VOCs), and providing ease and versatility of installation.

- Odourless, moisture tolerant and easy to install
- LokDots allows installation on green slabs at 100% RH
- Ideal for installation in occupied space
- Shaw Contract carpet tile installed with LokDots are moveable, 100% recyclable, and offer guaranteed reclamation and recycling

# THIRD PARTY CERTIFICATIONS



**LIVING  
BUILDING  
CHALLENGE**



**Declare.**  SM



# ECOWORX & ECOLOGIX ENVIRONMENTAL GUARANTEE



GUARANTEED RECLAMATION & RECYCLING.  
WE WANT IT BACK

Shaw Contract's EcoWorx<sup>®</sup> & Ecologix<sup>®</sup> carpet tiles are now part of our Re.Form programme.

Jacobsen's Re.Form program aims to reduce landfill waste by reusing and recycling flooring materials. Contractors can return materials in reusable condition or Jacobsen will collect and send them back for recycling at no cost to you.

Contact us today to find out more about our Re.Form programme.

# CONTACT:

---

HEAD OFFICE  
41D MORRIN ROAD  
MT WELLINGTON, AUCKLAND 1072  
PHONE: (09) 574 0640

PO BOX 28042  
REMUERA, AUCKLAND 1541

AUCKLAND DISTRIBUTION CENTRE  
41 MORRIN ROAD  
(2ND DRIVEWAY OFF TAINUI RD)  
MT WELLINGTON, AUCKLAND 1072  
PHONE: (09) 574 0640

WELLINGTON BRANCH  
OPEN BY APPOINTMENT ONLY  
1/23 MARION STREET  
TE ARO, WELLINGTON 6001  
PHONE: (04) 495 4300

CHRISTCHURCH BRANCH  
OPEN BY APPOINTMENT ONLY  
7/142 FERRY ROAD  
WALTHAM, CHRISTCHURCH 8011  
PHONE: (03) 366 4153

CUSTOMER SERVICE  
AVAILABLE TO SUPPORT  
FLOORING PROFESSIONALS  
Phone: (09) 574 0640  
Freephone: 0800 800 460

[jacobsen.co.nz](http://jacobsen.co.nz)

---

JOHN TOLHURST  
NATIONAL COMMERCIAL SALES MANAGER  
& HEALTH CARE DEVELOPMENT MANAGER  
AUCKLAND  
JOHN.TOLHURST@JACOBSEN.CO.NZ  
021 863 831

AMIE BERGHAN  
A&D RESIDENTIAL SALES  
AMIE.BERGHAN@JACOBSEN.CO.NZ  
021 973 806

CHRIS BEBAN  
COMMERCIAL SALES CONSULTANT  
CHRISTCHURCH  
CHRIS.BEBAN@JACOBSEN.CO.NZ  
027 742 5182

CHRIS DICK  
COMMERCIAL CONTRACTOR MANAGER  
AUCKLAND  
CHRIS.DICK@JACOBSEN.CO.NZ  
021 628 299

EAMON MCCREESH  
EDUCATION DEVELOPMENT MANAGER  
AUCKLAND  
EAMON.MCCREESH@JACOBSEN.CO.NZ  
021 279 1111

HAMISH MORRISON  
CORPORATE ACCOUNT SALES MANAGER  
AUCKLAND  
HAMISH.MORRISON@JACOBSEN.CO.NZ  
021 996 011

HOLLY GREEN  
WORKPLACE DEVELOPMENT MANAGER  
AUCKLAND  
HOLLY.GREEN@JACOBSEN.CO.NZ  
027 742 5181

JUSTINE WHITE  
COMMERCIAL SALES CONSULTANT  
WELLINGTON  
JUSTINE.WHITE@JACOBSEN.CO.NZ  
021 427 088

KIRK SMITH  
COMMERCIAL SALES CONSULTANT  
AUCKLAND  
KIRK.SMITH@JACOBSEN.CO.NZ  
021 946 462

KYLIE HAY  
COMMERCIAL SALES CONSULTANT  
CHRISTCHURCH  
KYLIE.HAY@JACOBSEN.CO.NZ  
021 960 006

MARK FAULKNER  
COMMERCIAL TERRITORY MANAGER  
DUNEDIN, CHRISTCHURCH  
MARK.FAULKNER@JACOBSEN.CO.NZ  
021 644 982

MATT JONES  
COMMERCIAL TERRITORY MANAGER  
MANAWATŪ, TARANAKI, HAWKE'S BAY  
MATT.JONES@JACOBSEN.CO.NZ  
021 978 640

RHYS ARROWSMITH  
COMMERCIAL TERRITORY MANAGER  
WAIKATO  
RHYS.ARROWSMITH@JACOBSEN.CO.NZ  
027 570 2233